

OHIO DEPARTMENT OF HIGHWAYS CENTERLINE SURVEY PLAT

U.S. ROUTE - 40 SEC. 23.88
GUERNSEY COUNTY, OHIO
OXFORD TOWNSHIP R-7 T-10 SEC. 2, 8, 14, 20, 26

67

COUNTY HIGHWAY 27 - RELOCATED

FED. RD. DIVISION	STATE	PROJECT
2	OHIO	

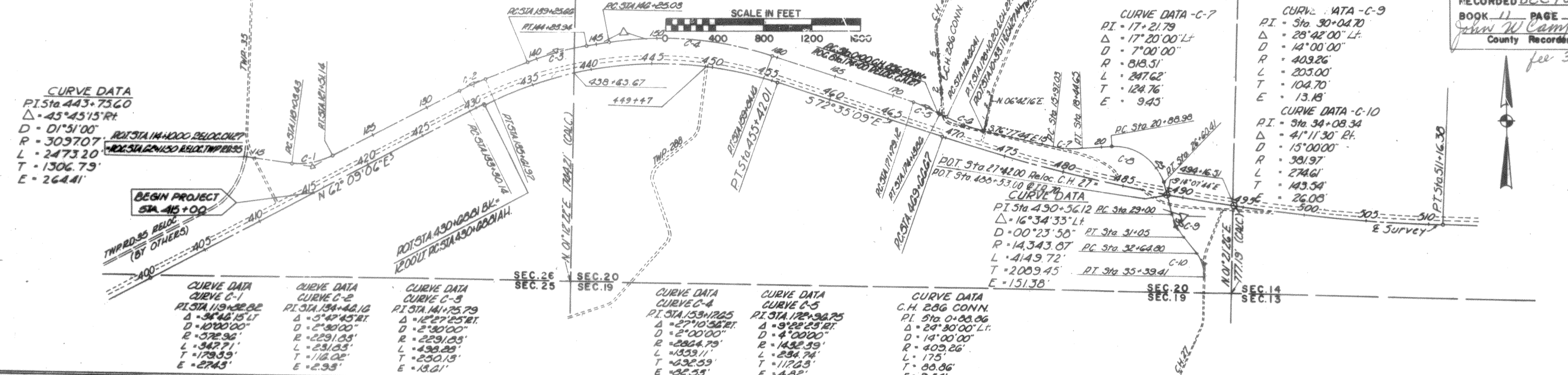
455
485

GUERNSEY 40-23.88
BELMONT 40-0.00

2
32

RECEIVED DEC 16 1963
RECORDED DEC 16 1963
BOOK 11 PAGE 67
John W. Campbell
County Recorder

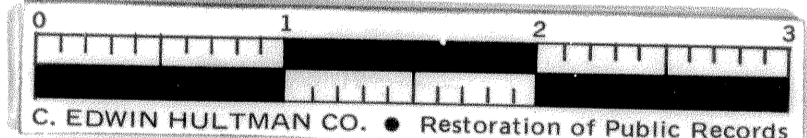
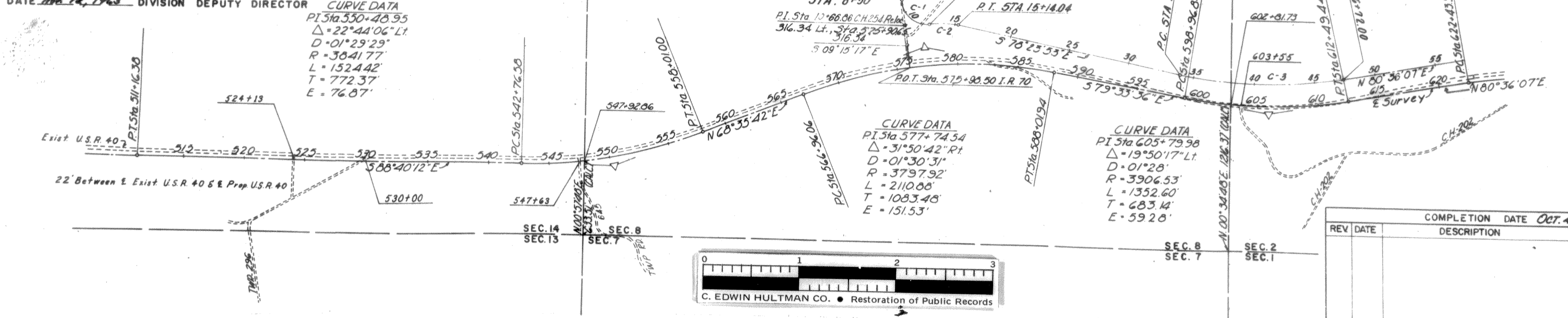
for 300 pps



I hereby certify that this Plat is a true delineation of a survey made for the Ohio Department of Highways in 1962 by *Rockoff Associates* David S. Guthrie
Date Oct. 4, 1963
Registered Surveyor No. 4378

SIGNED *James T. Holden*
James T. Holden - Reg. Surveyor No. 3766
DATE Oct. 12, 1963 DIVISION DEPUTY DIRECTOR

THIS IMPROVEMENT HAS BEEN DECLARED A LIMITED ACCESS HIGHWAY FROM STATION 415+00 TO STATION 657+41.53 BY ACTION OF THE DIRECTOR OF HIGHWAYS AND RECORDED IN VOLUME 47 PAGE 690 OF THE DIRECTOR'S JOURNAL PURSUANT TO LAW



COMPLETION DATE <u>Oct. 4, 1963</u>	
REV	DESCRIPTION

R/W CENTERLINE PLAT