

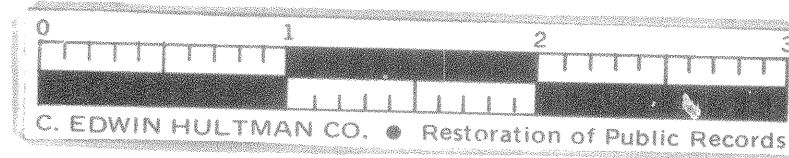
CENTER LINE SURVEY PLAT

STATE ROUTE 209 GUE-209-8.54

GUERNSEY COUNTY, OHIO

CAMBRIDGE TWP. T2N, R3W S.E. QUARTER, MILITARY LOTS 10, 11, & 20

CITY OF CAMBRIDGE



17391

Received 9-17-1964
 Recorded 9-17-1964
 Book 11 Page 76
 John W. Campbell
 County Recorder
 By: Madelyne Miles
 Dep.
 Pie 3rd pd.

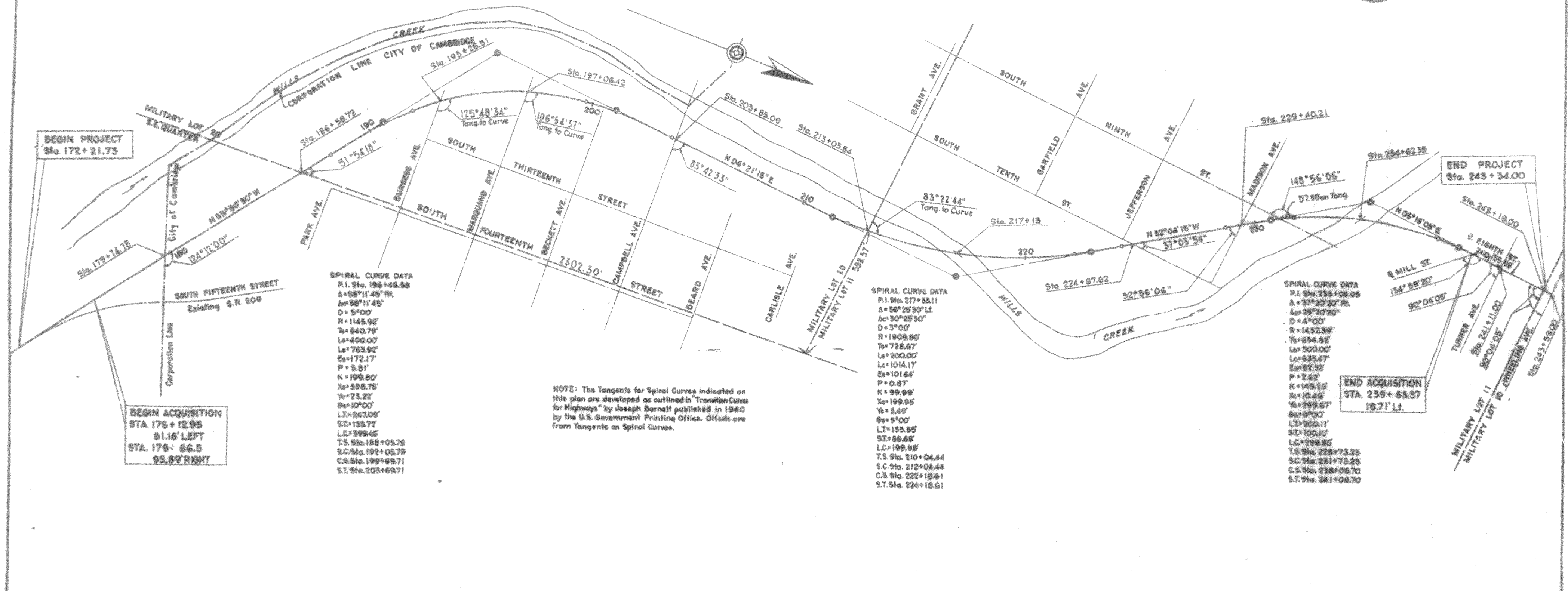
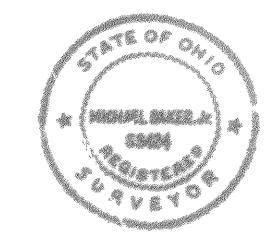
76

FED. RD. DIVISION	STATE	PROJECT
2	OHIO	FU-656(3)

GUERNSEY COUNTY
GUE-209-8.54

A/
C7
2
12
R/W

I hereby certify that this plat is a true delineation of a survey made for the Ohio Department of Highways in
 by Michael Baker Jr.
 Date Feb 20 64
 Registered Land Surveyor, S-5424



SPIRAL CURVE DATA
 P.I. Sta. 196+46.58
 Δ = 58°11'45" RL
 Δ = 38°11'45"
 D = 5°00'
 R = 1145.92'
 Ts = 840.79'
 Ls = 400.00'
 Le = 765.92'
 Es = 172.17'
 P = 5.81'
 K = 199.80'
 Xs = 598.78'
 Ys = 23.22'
 Os = 10°00'
 LT = 267.09'
 ST = 153.72'
 LC = 599.46'
 T.S. Sta. 188+05.79
 S.C. Sta. 192+05.79
 C.S. Sta. 199+69.71
 S.T. Sta. 205+69.71

NOTE: The Tangents for Spiral Curves indicated on this plan are developed as outlined in "Transition Curves for Highways" by Joseph Barnett published in 1940 by the U.S. Government Printing Office. Offsets are from Tangents on Spiral Curves.

SPIRAL CURVE DATA
 P.I. Sta. 217+35.11
 Δ = 36°25'50" RL
 Δ = 30°25'30"
 D = 3°00'
 R = 1909.86'
 Ts = 728.67'
 Ls = 200.00'
 Le = 1014.17'
 Es = 101.44'
 P = 0.87'
 K = 99.99'
 Xs = 199.95'
 Ys = 3.44'
 Os = 5°00'
 LT = 153.55'
 ST = 66.68'
 LC = 199.98'
 T.S. Sta. 210+04.44
 S.C. Sta. 212+04.44
 C.S. Sta. 222+18.61
 S.T. Sta. 224+18.61

SPIRAL CURVE DATA
 P.I. Sta. 235+08.05
 Δ = 37°20'20" RL
 Δ = 25°20'20"
 D = 4°00'
 R = 1432.39'
 Ts = 654.82'
 Ls = 300.00'
 Le = 633.47'
 Es = 82.32'
 P = 2.82'
 K = 149.25'
 Xs = 10.46'
 Ys = 299.67'
 Os = 6°00'
 LT = 200.11'
 ST = 100.10'
 LC = 299.85'
 T.S. Sta. 228+73.25
 S.C. Sta. 231+73.25
 C.S. Sta. 238+06.70
 S.T. Sta. 241+06.70

BEGIN ACQUISITION
 STA. 176+12.95
 81.16' LEFT
 STA. 178+66.5
 95.89' RIGHT

END ACQUISITION
 STA. 239+63.37
 18.71' LI.

MONUMENT ASSEMBLY BOXES WILL BE SET ON THE C OF S.R. 209 AT THE FOLLOWING STATIONS AFTER CONSTRUCTION

P.O.T. 178+00.00	S.C. 212+04.44
P.O.T. 183+00.00	P.O.C. 215+00.00
T.S. 188+05.79	P.O.C. 219+50.00
S.C. 192+05.79	C.S. 222+18.61
P.O.C. 196+00.00	S.T. 224+18.61
C.S. 199+69.71	T.S. 228+73.25
S.T. 203+69.71	S.T. 241+06.70
T.S. 210+04.44	