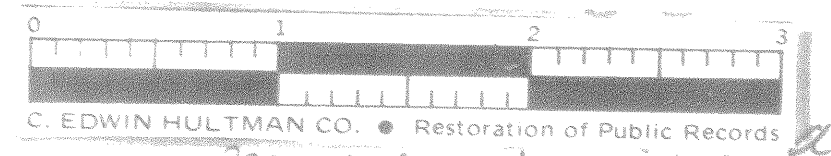


CENTER LINE SURVEY PLAT

GUE-77-4.77
 JACKSON & CAMBRIDGE TWPS.
 U.S.M.L. N^os 3,4,5,6,11,12,13, & 14 T.1, R.3, U.S.M.L.
 GUERNSEY COUNTY



C. EDWIN HULTMAN CO. • Restoration of Public Records
 Filed *Mar 10* 1965 at 10:30 M
 Recorded *Mar 10* 1965
 Vol. *11* Page *80*
 JOHN W. CAMPBELL, Recorder
 GUERNSEY COUNTY, OHIO



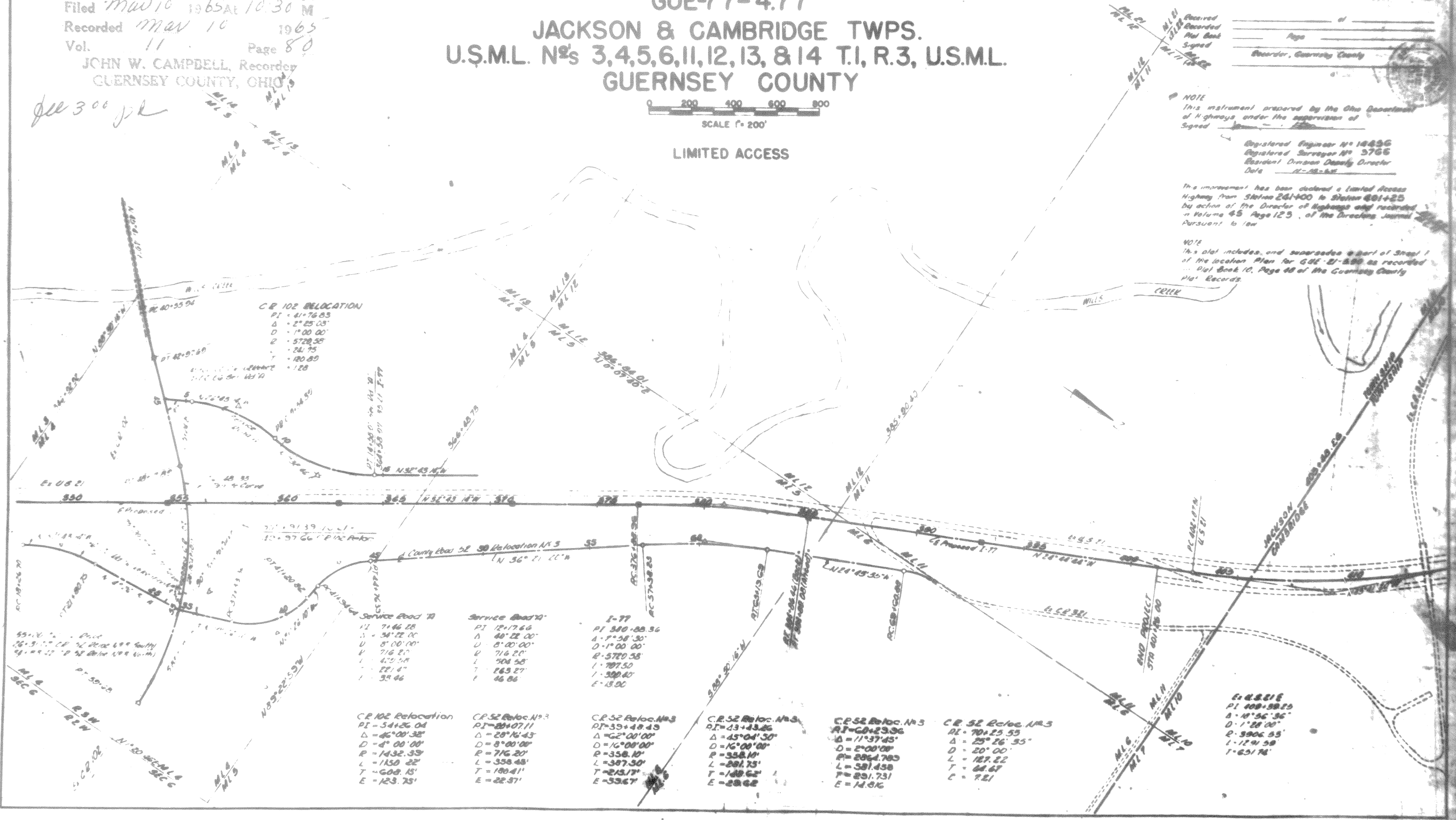
LIMITED ACCESS

NOTE
 This instrument prepared by the Ohio Department of Highways under the supervision of Signed _____

Registered Engineer No. 14826
 Registered Surveyor No. 3766
 Resident District Deputy Director
 Date 11-22-65

The instrument has been declared a Limited Access Highway from Station 241+00 to Station 401+25 by action of the Director of Highways and recorded in Volume 45 Page 125 of the Director's Journal Pursuant to law

NOTE
 This plat includes, and supersedes all of Sheet 1 of the location plan for GUE-77-4.77 as recorded in Plat Book 10, Page 80 of the Guernsey County Plat Records.



CR 102 Relocation	Service Road 7A	Service Road 7B	I-77
PI = 41+76.83	PI = 71+66.25	PI = 12+17.64	PI = 389+20.36
Δ = 2° 25' 03"	Δ = 34° 22' 00"	Δ = 40° 22' 00"	Δ = 7° 58' 30"
D = 1700.00'	D = 8' 00' 00"	D = 8' 00' 00"	D = 1' 00' 00"
R = 5720.35'	L = 716.20'	L = 716.20'	R = 5720.35'
T = 24.75'	L = 420.58'	L = 504.58'	L = 707.50'
E = 120.89'	L = 22' 4"	L = 163.27'	L = 300.40'
	L = 35.66'	L = 46.86'	E = 13.00'

CR 52 Reloc. N.S.	CR 52 Reloc. N.S.	CR 52 Reloc. N.S.	CR 52 Reloc. N.S.	CR 52 Reloc. N.S.	CR 52 Reloc. N.S.
PI = 54126.04	PI = 20407.11	PI = 39+48.43	PI = 43+43.25	PI = 68+23.06	PI = 70+25.55
Δ = 46° 00' 38"	Δ = 29° 16' 43"	Δ = 62° 00' 00"	Δ = 45° 04' 30"	Δ = 11° 37' 45"	Δ = 25° 26' 55"
D = 4' 00' 00"	D = 8' 00' 00"	D = 16' 00' 00"	D = 16' 00' 00"	D = 2' 00' 00"	D = 20' 00"
R = 1432.33'	R = 716.20'	R = 358.10'	R = 358.10'	R = 2864.783	L = 127.22'
L = 1150.22'	L = 358.48'	L = 397.50'	L = 287.73'	L = 581.458	T = 64.67'
T = 608.15'	T = 180.41'	T = 215.17'	T = 180.62'	T = 291.731	C = 7.21'
E = 123.75'	E = 22.57'	E = 53.67'	E = 28.62'	E = 14.06'	

E 45.816
 PI 100+88.25
 Δ = 11° 56' 36"
 D = 1' 28' 00"
 R = 3906.95'
 L = 12.91 58'
 T = 651.76'