

This improvement has been declared a Limited Access Highway from Station 746+00 to Station 32+00, by action of the Director of Highways and recorded in Volume 45146, Page 24126 of the Director's Journal pursuant to law.

For Preceding Survey, see Plat for MUS-70-21.31 Recorded in Book 11, Pgs. 20 & 21 of The Muskingum County Plat Records.

CENTERLINE SURVEY PLAT

INTERSTATE ROUTE 70
 MUS-70-26.86 MUSKINGUM COUNTY
 GUE-70-0.00 GUERNSEY COUNTY
 UNION TOWNSHIP T-1, R-5, SEC. 10, USML.
 WESTLAND TOWNSHIP T-1, R-4, SEC. 2, 3 & 8 USML.

Received April 19 65
 Recorded April 19 65
 Book 11 Page 81
 John W. Cammeyer
 City Recorder

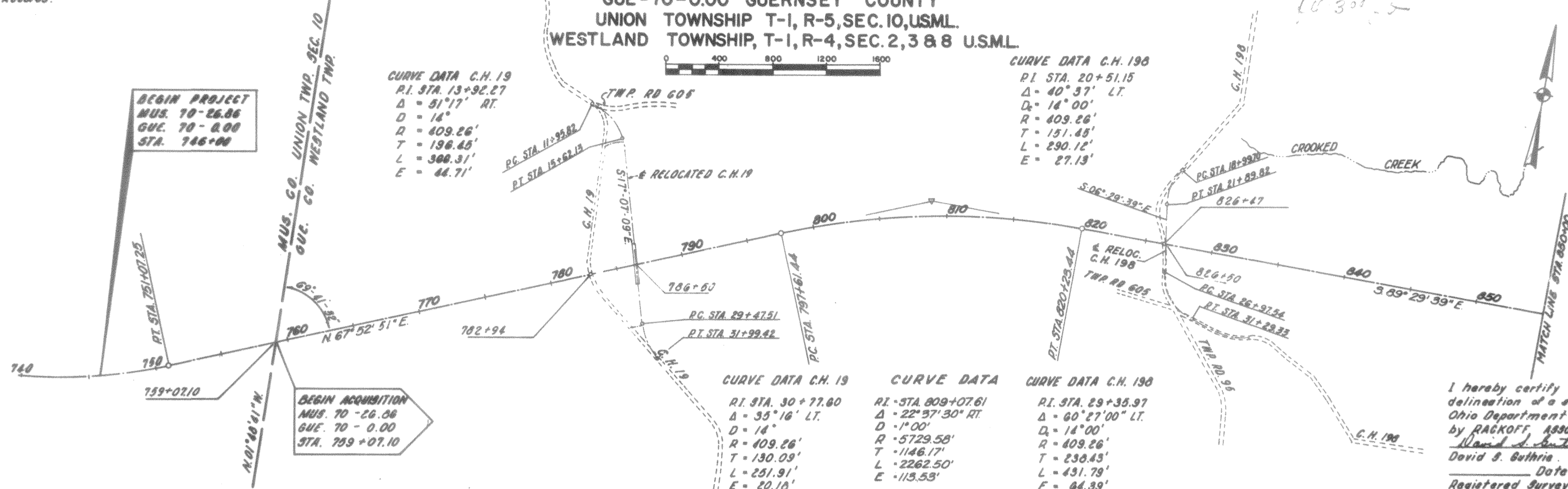
81

FED. RD. DIVISION	STATE	PROJECT
2	OHIO	

MUSKINGUM COUNTY
 GUERNSEY COUNTY
 MUS-70-26.86; GUE-70-0.00

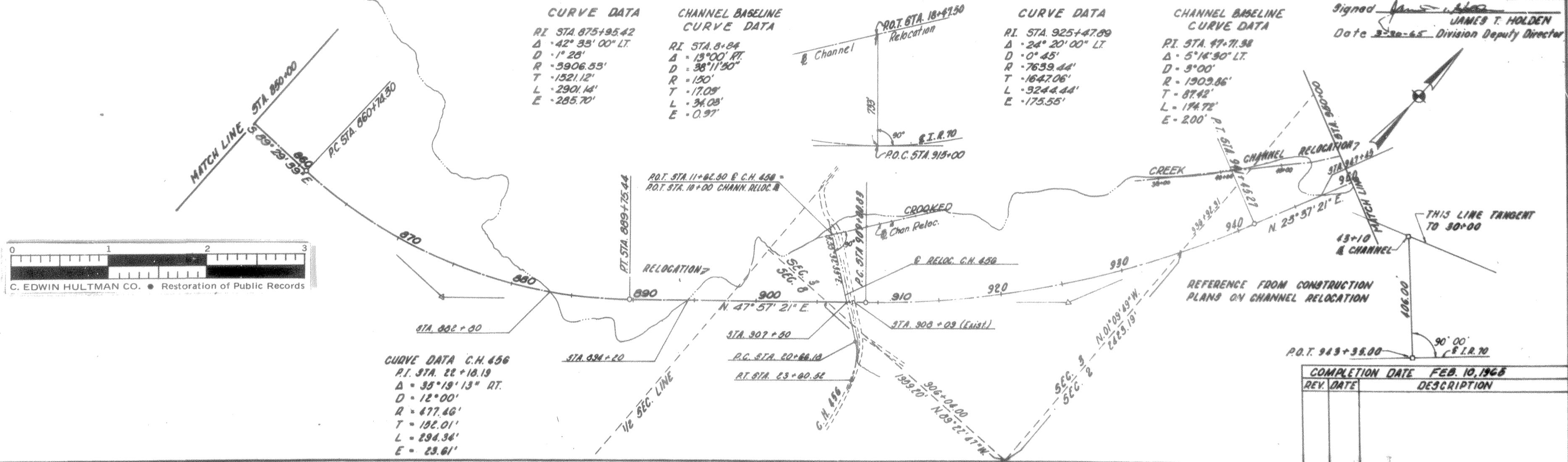
393
127

2
36



I hereby certify this is a true delineation of a survey made for the Ohio Department of Highways in 1965 by RACKOFF ASSOCIATES.
 David S. Guthrie
 Date Feb. 10, 1965
 Registered Surveyor No. 4370

Signed James T. Holden
 JAMES T. HOLDEN
 Date 3-20-65 Division Deputy Director



COMPLETION DATE	FEB. 10, 1965
REV. DATE	DESCRIPTION

0 1 2 3
 C. EDWIN HULTMAN CO. • Restoration of Public Records

R/W CENTERLINE SURVEY PLAT