

CENTER LINE SURVEY PLAT

GUE-77-0.00

VALLEY TWP., GUERNSEY COUNTY, OHIO

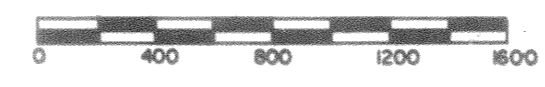
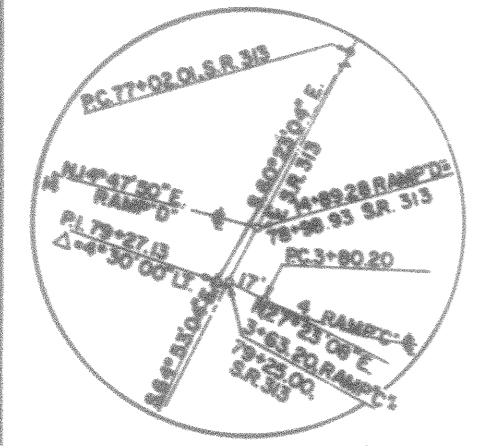
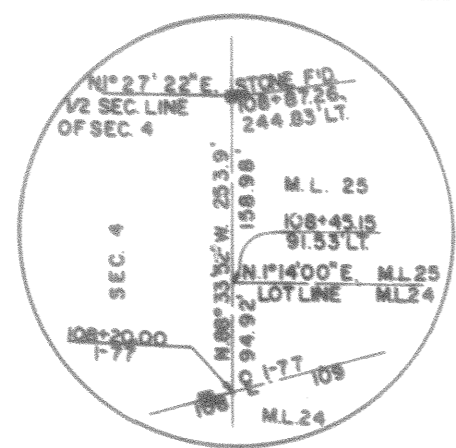
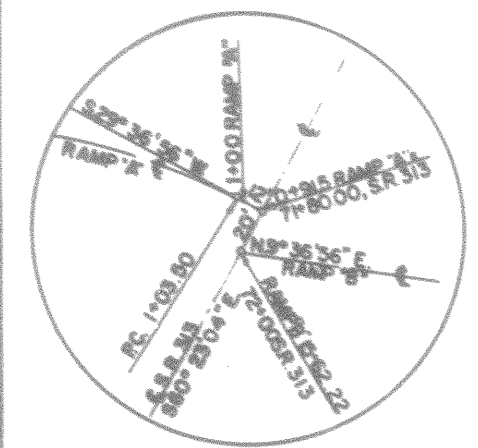
T.8N., R.9W., CONGRESS LANDS SEC'S. 9&4

T.1N., R.2W., U.S. MILITARY LANDS, M.L. 24&25

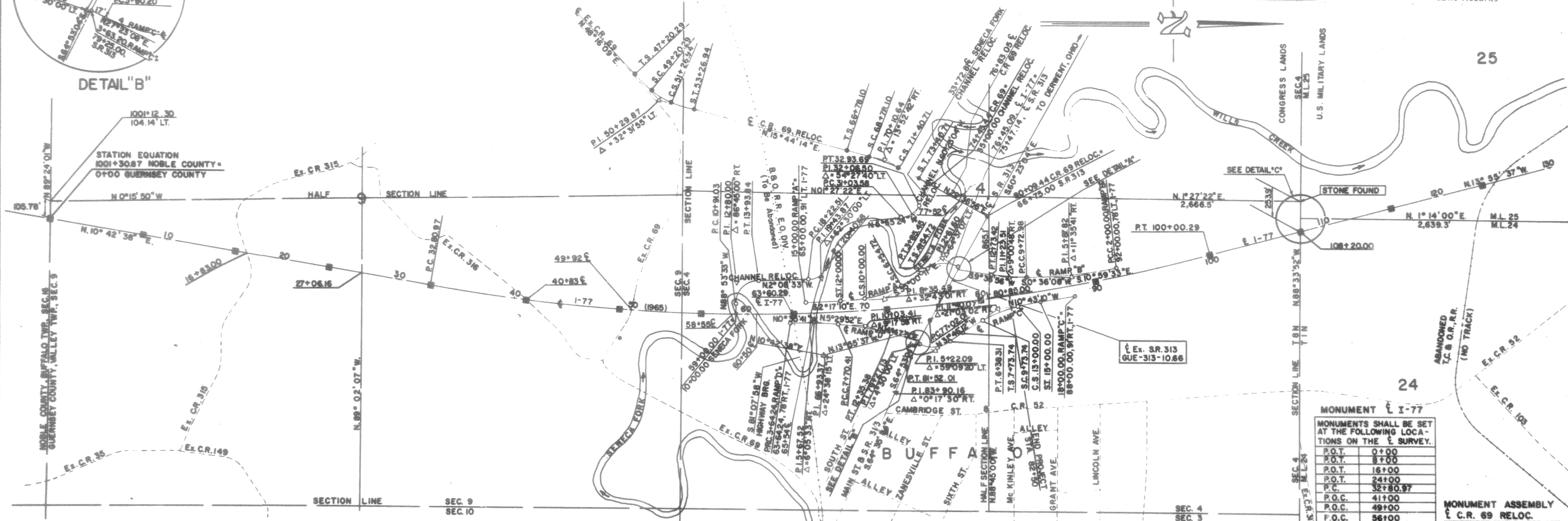
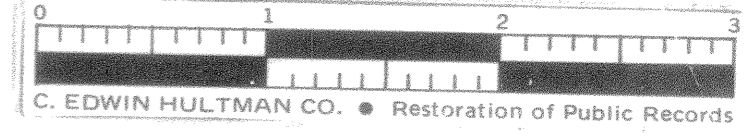
Received 3/11/11 - 301965 11:30 AM
Recorded 4/17/11 - 32-1465
Plat Book Page 83
Signed John W. [Signature] Recorder, Guernsey County
Fee: 3.00 pd

Note: This instrument prepared by the Ohio Department of Highways under the Supervision of Signed [Signature]
Registered Engineer No. 14456
Registered Surveyor No. 3766
Resident Division Deputy Director
Date 3/11/11

Note: This improvement has been declared a Limited Access Highway from Station 0+00 to Station 83+50 by action of the Director of Highways and recorded in Volume 45, Page 125, of the Directors Journal Pursuant to law.



LIMITED ACCESS



CURVE DATA	1-77	RAMP "A"	RAMP "D"	S.R. # 313	RAMP "B"	RAMP "C"	C.R. # 69 RELOCATION	SENEGA FORK RELOCATION	CURVE DATA
PI	68+93.37	2161.60	8+35.49	57+67.52	10703.41	79+27.13	57+22.09	11+40.07	50+28.87
Δ	24°38'55"	64°37'07"	32°43'01"	6°05'33"	9°47'58"	4°30'00"	11°35'41"	8°00'48"	39°09'20"
Δc	0°22'00"	22°55'06"	6°00'00"	1°30'00"	2°00'00"	1°00'00"	1°30'00"	3°00'00"	22°55'06"
R	15,626.12'	250.00'	954.93'	3,819.72'	2,864.79'	5,729.58'	3,819.72'	1,309.86'	250.00'
Lc	6,783.32'	281.95'	348.28'	406.17'	464.97'	450.00'	772.98'	300.44'	258.11'
T	3,412.40'	140.97'	174.14'	203.08'	232.48'	225.00'	386.49'	150.22'	129.05'
Ls	200.00'	200.00'	200.00'	200.00'	200.00'	200.00'	200.00'	200.00'	200.00'
Δs	8°00'00"	8°00'00"	8°00'00"	8°00'00"	8°00'00"	8°00'00"	8°00'00"	8°00'00"	8°00'00"
Xs	199.78'	199.78'	199.78'	199.78'	199.78'	199.78'	199.78'	199.78'	199.78'
Ys	6.98'	6.98'	6.98'	6.98'	6.98'	6.98'	6.98'	6.98'	6.98'
E	368.26'	45.80'	42.10'	5.41'	9.48'	4.41'	19.64'	5.92'	37.48'

MONUMENT I-77

MONUMENTS SHALL BE SET AT THE FOLLOWING LOCATIONS ON THE I SURVEY.

P.O.T.	0+00
P.O.T.	8+00
P.O.T.	16+00
P.O.T.	24+00
P.C.	32+80.97
P.O.C.	41+00
P.O.C.	49+00
P.O.C.	56+00
P.O.C.	64+00
P.O.C.	72+00
P.O.C.	80+00

MONUMENT ASSEMBLY I-77

MONUMENTS SHALL BE SET AT THE FOLLOWING LOCATIONS ON THE I SURVEY.

T.S.	47+20.29
S.C.	49+20.29
C.S.	51+26.94
S.T.	53+26.94
P.O.T.	60+00
T.S.	68+78.10
S.C.	68+78.10
C.S.	71+40.71
S.T.	73+40.71

