

Received April 30 1965 at 11:37 AM
Recorded April 30 1965
Plat Book Page 84
Signed John W. C. Hultman
Recorder, Guernsey County
Fee 300

Note: This instrument prepared by the Ohio Department of Highways under the Supervision of Signed [Signature]
Registered Engineer No. 14450
Registered Surveyor No. 3766
Resident Division Deputy Director
Date 3-3-65

Note: This improvement has been declared a Limited Access Highway from Station 82+50 to Station 24+00 by action of the Director of Highways and recorded in Volume 45, Page 123, of the Directors Journal Pursuant to Law.

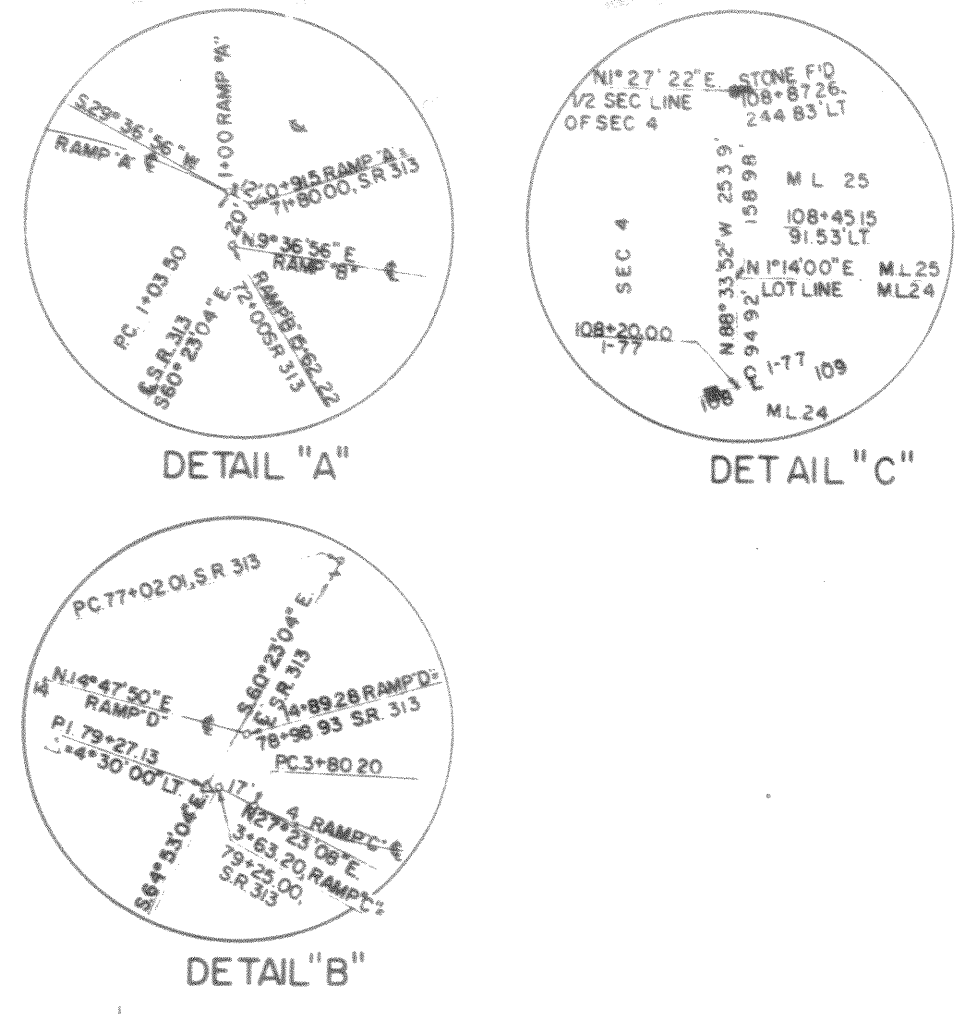
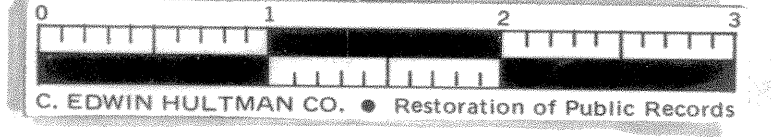
CENTER LINE SURVEY PLAT

GUE-77-1.56

VALLEY TWP., GUERNSEY COUNTY, OHIO
T.8N., R.9W., CONGRESS LANDS SEC'S. 9&4
T. 1N., R. 2 W., U. S. MILITARY LANDS, M.L. 24&25



LIMITED ACCESS



Monuments Shall be Set at the following locations on the E Survey.

P.O.C.	90+00.00
P.T.	100+00.29
P.O.T.	108+00.00
P.O.T.	116+00.00
P.O.T.	124+00.00

MONUMENT ASSEMBLY SR 313
Monuments Shall be Set at the following locations on the E Survey.

P.O.T.	66+75.00
P.C.	77+02.01
P.T.	81+52.01
P.T.	83+90.16

CURVE DATA	I-77	RAMP "A"	RAMP "D"	S.R.# 313	RAMP "B"	RAMP "C"	C.R.# 69 RELOCATION	SENEGA FORK RELOCATION	CURVE DATA							
PI	66+93.37	2+61.60	8+35.49	5+67.52	10+03.41	79+27.33	5+87.82	11+23.51	5+22.09	11+40.07	50+29.87	70+10.64	12+80.00	19+43.87	32+06.50	P.I.
Δ	24°38'15"	64°37'07"	32°43'01"	6°05'33"	9°17'58"	4°30'00"	1°35'41"	9°00'48"	59°09'20"	21°03'02"	32°31'55"	13°52'42"	86°45'00"	62°30'00"	54°27'40"	P.T.
Dc	0°22'00"	22°55'06"	6°00'00"	1°30'00"	2°00'00"	1°00'00"	1°30'00"	3°00'00"	22°55'06"	4°00'00"	8°00'00"	3°00'00"	28°38'52"	28°38'52"	28°38'52"	Dc
R	15,626.12'	250.00'	954.93'	3,819.72'	2,864.79'	5,729.58'	3,819.72'	1,909.86'	250.00'	1432.39'	716.22'	1,909.86'	250.00'	200.00'	200.00'	R
Lc	6,719.32	281.95'	345.28'	406.17'	464.97'	450.00'	772.96'	300.44'	258.11'	326.26'	206.65'	262.61'	302.81'	218.17'	190.11'	Lc
T	3,412.40	156.10'	380.77'	203.28'	233.00'	255.12'	387.82'	150.53'	147.89'	366.33'	309.58'	332.54'	188.97'	121.36'	102.92'	T
Ls		200.00'	6°00'00"							200.00'	200.00'	200.00'	200.00'	200.00'	200.00'	Ls
Os										4°00'00"	8°00'00"	3°00'00"				Os
Xs		199.78'								199.90'	199.61'	199.95'				Xs
Ys		6.98'								4.65'	9.30'	3.49'				Ys
E	368.26	45.80'	42.10'	5.41'	9.46'	4.41'	19.64'	5.92'	37.46'	25.70'	32.29'	14.97'				E

