

This improvement has been declared a LIMITED ACCESS HIGHWAY
 From station 1025+00 to station 1174+00 by action of the
 DIRECTOR of HIGHWAYS and Recorded in Volume 46, Page 1165 of
 the DIRECTORS JOURNAL PURSUANT TO LAW.

CENTER LINE SURVEY PLAT

GUE-77-19.77

GUERNSEY COUNTY, OHIO

LIBERTY TWP, T4N-R3W-SECTION 21 (U.S.M.L.)

WHEELING TWP, T4N-R3W-SECTIONS 19 & 20 (U.S.M.L.)

86

FED. RD.	STATE	PROJECT
2	OHIO	I-77-2(4)54

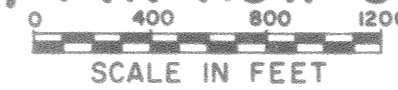
GUE-77-19.77
 LIMITED ACCESS

152
170

1
19



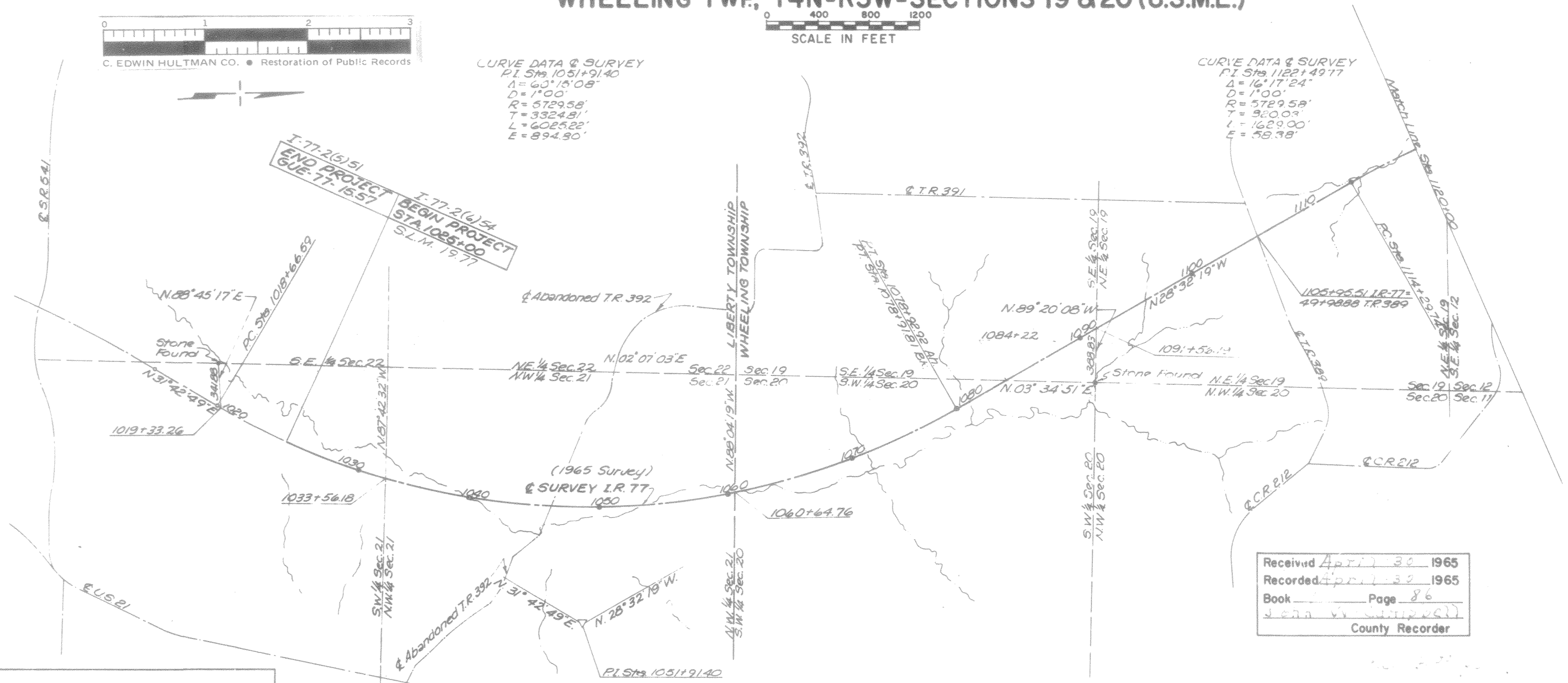
C. EDWIN HULTMAN CO. • Restoration of Public Records



SCALE IN FEET

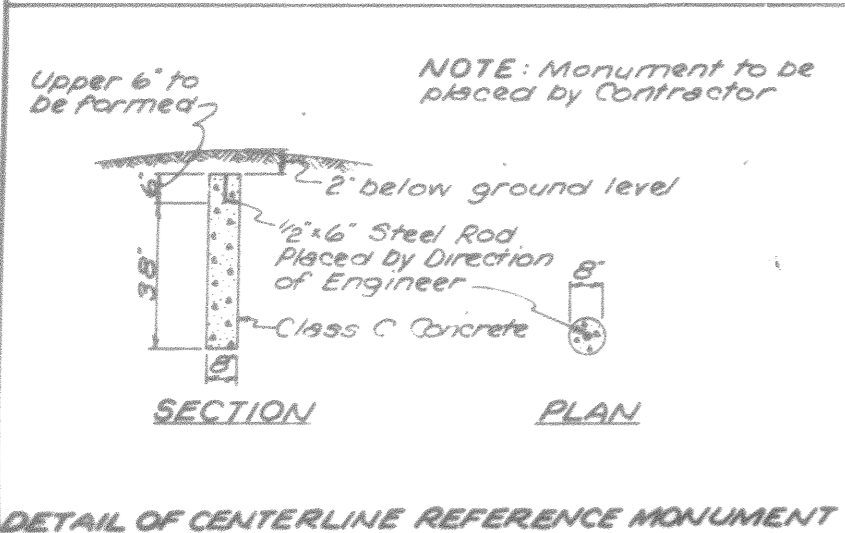
CURVE DATA & SURVEY
 P.I. Sts 1051+91.40
 Δ = 63°15'08"
 D = 1°00'
 R = 5729.58'
 T = 3324.81'
 L = 6025.22'
 E = 894.30'

CURVE DATA & SURVEY
 P.I. Sts 1122+49.77
 Δ = 16°17'24"
 D = 1°00'
 R = 5729.58'
 T = 320.03'
 L = 1629.00'
 E = 58.38'



Received April 30 1965
 Recorded April 30 1965
 Book _____ Page 86
 J. E. McCoy
 County Recorder

Signed JAMES T. HOLDEN
 Date 4-27-65 Division Deputy Director



TYPICAL	E REFERENCE MONUMENT STA.
Survey Monument	P.O.C. 1031+00 R.O.T. 1100+00 P.O.C. 1040+00 P.C. 1114+29.74 P.O.C. 1050+00 P.O.C. 1060+00 P.O.C. 1070+00 P.T. 1078+92.924h 1078+91.818k P.O.T. 1090+00
TOTAL 9 Each	

I hereby certify that this plat is a true delineation of a survey made for the OHIO DEPARTMENT OF HIGHWAYS by BEISWENGER, HOCH, & ARNOLD
 Bryan E. McCoy Date 4-27-65
 BRYAN E. MCCOY
 Reg. Surveyor No. 4936