

CENTER LINE SURVEY PLAT

INTERSTATE ROUTE 77 GUE-77-15.57

GUERNSEY COUNTY, OHIO

90

Received _____
 Recorded _____
 Book _____ Page _____
 County Recorder _____

FED. RD. DIVISION	STATE	PROJECT
2	OHIO	I-77-2(5)51

I-77-2(5)51

LIMITED ACCESS HIGHWAY

369

2
26
RM

This improvement has been declared a Limited Access Highway from Station 803+50 to Station 1025+00 by action of the Director of Highways & recorded in Volume 46 Page 1165 of the Directors Journal pursuant to law.

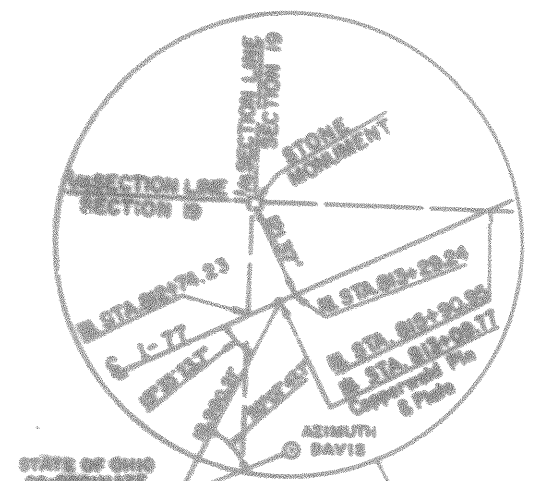
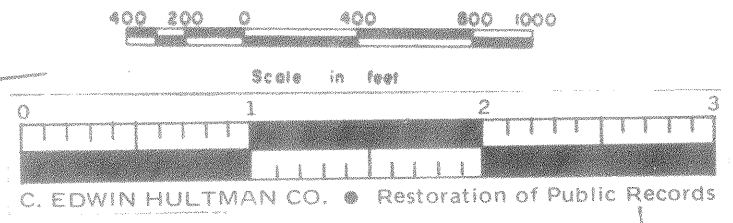
LIBERTY TWP. T-3N, R-3W SECTIONS 9, 12 & 19

1724

CERTIFICATE OF APPROVAL

APPROVED _____

DATE 2-22-66 Division Deputy Director



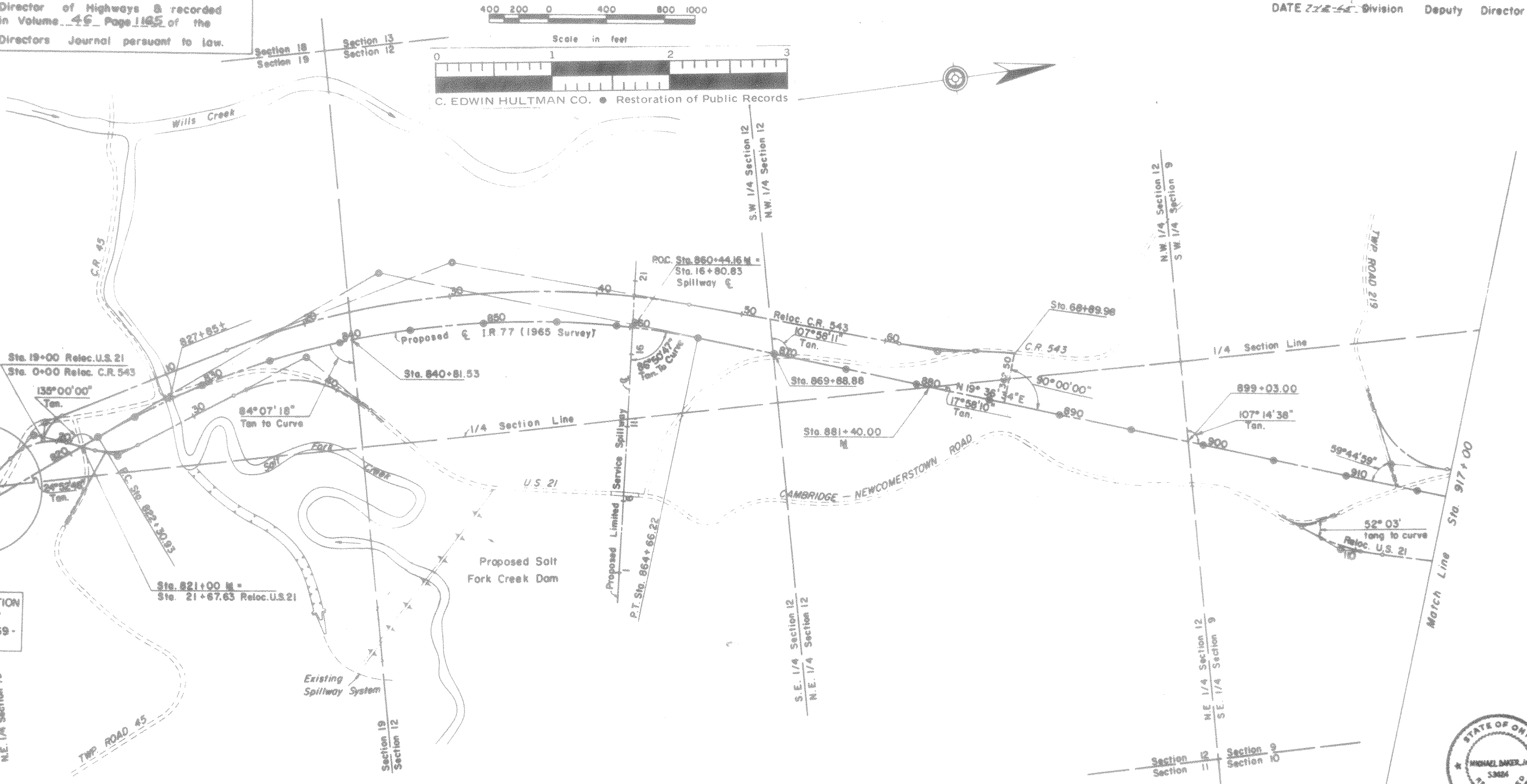
TOWNSHIP T-3N, R-3W Section 19
 LIBERTY TWP.

I-77

P.I. Sta. 795+33.96
 $\Delta = 46^\circ 15' 45''$ L.I.
 $D = 1^\circ 15' 00''$
 $R = 4888.66'$
 $L = 3702.33'$
 $T = 1958.84'$
 $E = 401.02'$
 P.C. Sta. 773+78.11
 P.T. Sta. 810+77.44

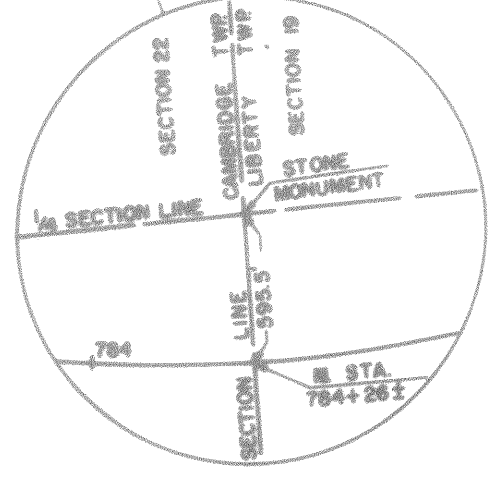
I-77

P.I. Sta. 844+80.86
 $\Delta = 42^\circ 21' 10''$ R.I.
 $D = 1^\circ 00' 00''$
 $R = 6729.96'$
 $L = 4238.29'$
 $T = 2219.65'$
 $E = 414.86'$
 P.C. Sta. 822+30.93
 P.T. Sta. 864+66.22

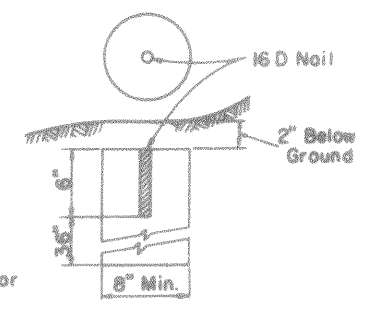


BEGIN PROJECT
 GUE-77-15.57
 I-77-2(5)51
 STA. 803+50

BEGIN ACQUISITION
 GUE-77-15.57
 STA. 806+58.69 -
 133.78' L.I.



- NOTES:
1. Upper 6" to be formed
 2. Concrete to be Class "C"
 3. Monuments to be placed by Contractor



CENTERLINE
 REFERENCE MONUMENT
 DETAIL
 (Not to Scale)

REFERENCE MONUMENTS WILL BE SET ON THE ϵ OF I-77 AT THE FOLLOWING STATIONS AFTER CONSTRUCTION.

P.C. 822+30.93	P.O.T. 870+00
P.O.C. 825+00	P.O.T. 875+00
P.O.C. 830+00	P.O.T. 880+00
P.O.C. 835+00	P.O.T. 885+00
P.O.C. 840+00	P.O.T. 890+00
P.O.C. 845+00	P.O.T. 895+00
P.O.C. 850+00	P.O.T. 900+00
P.O.C. 855+00	P.O.T. 905+00
P.O.C. 859+00	P.O.T. 910+00
P.T. 864+66.22	P.O.T. 915+00

I hereby certify that this plat is a true delineation of a survey made for the Ohio Department of Highways in _____ by Michael Baker Jr. _____ Date June 15, 1965
 Registered Land Surveyor S-3424



CENTER LINE SURVEY PLAT