

Received Nov 10 1965 Time 9:52 AM
 Recorded Nov 16 1965
 Plat Book 11 Page 94
 Signed Recorder, Guernsey Co., Ohio
 Fee Paid

FED. RD. DIVISION	STATE	PROJECT
2	OHIO	

This Instrument Was Prepared By The Ohio Dept. Of Highways Under The Supervision Of James T. Holden, P.E. No. 14456.
 Signed: _____
 Registered Surveyor No. 3766.
 Resident Division Deputy Director
 Date: 12-1-65

LOCATION PLAN

GUE-265-16.99, 18.20 GUERNSEY COUNTY
 MILLWOOD TWP. SEC. 1 & 7 T-9 R-7
 NOB-265-0.00 NOBLE COUNTY
 BEAVER TWP. SEC. 6 T-8 R-7
 CAMBRIDGE - BARNESVILLE ROAD

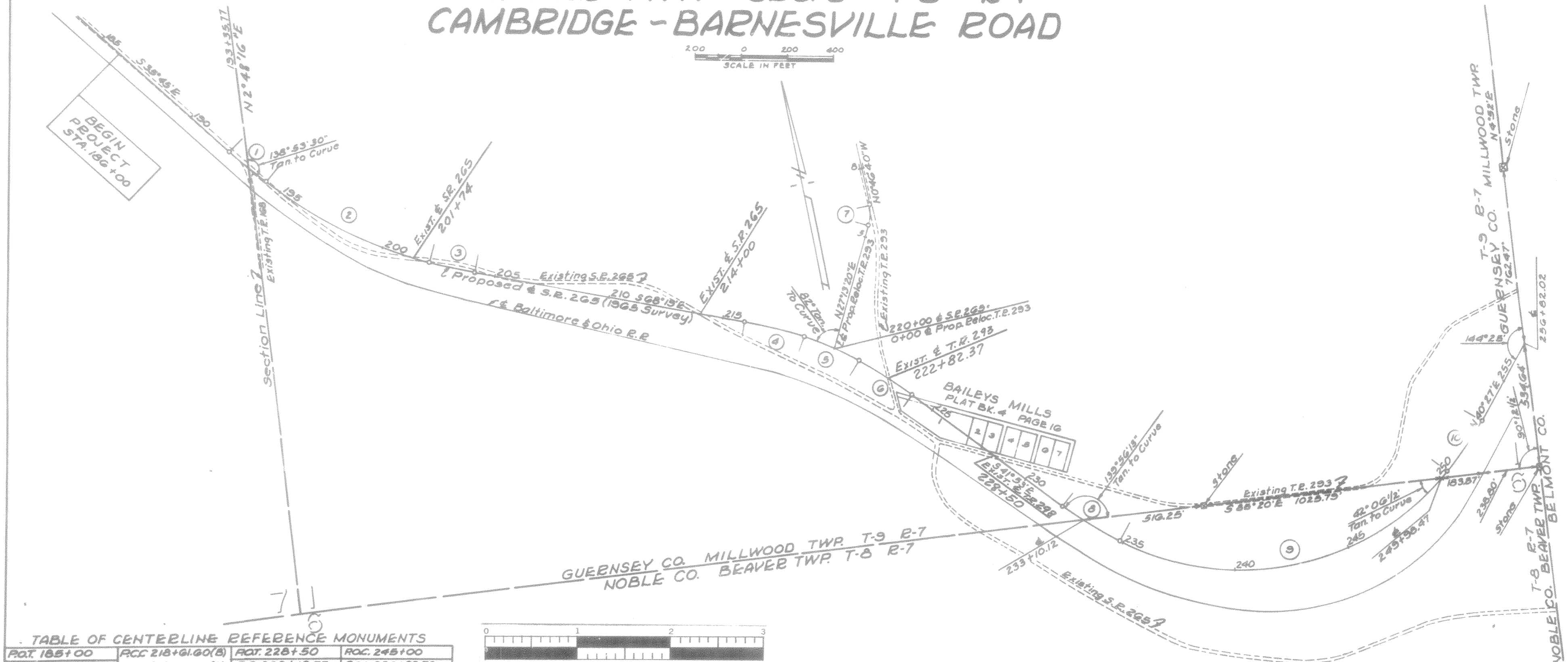
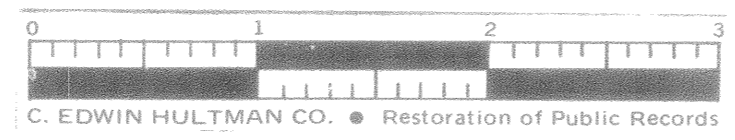


TABLE OF CENTERLINE REFERENCE MONUMENTS

P.O.T. 185+00	P.C.C. 218+61.60(B)	P.O.T. 228+50	P.O.C. 245+00
P.C. 192+22.96	218+61.63(A)	P.C. 232+19.77	P.C.C. 250+39.73
P.C.C. 194+22.26(B)	P.C.C. 221+22.37	P.C.C. 234+86.58(B)	P.T. 253+06.49(B)
194+22.26(A)	P.T. 223+89.08(B)	234+86.60(A)	253+06.36(A)
P.O.C. 198+00	223+89.01(A)	P.O.C. 240+00	
P.C.C. 202+07.82			
P.T. 204+07.84(B)			
204+07.82(A)			
P.O.T. 210+00			
P.C. 215+94.89			

All Centerline Reference Monuments will be set after construction at right angles to and 20.0 feet on each side of the Centerline at the Stations shown in the table.



CURVE DATA

1	2	3	4	5	6	7	8	9	10
P.C. 192+22.26	P.C.C. 194+22.26(B)	P.C.C. 202+07.82	P.C. 215+94.89	P.C.C. 218+61.60(B)	P.C.C. 221+22.37	P. 223+89.08(B)	P.C. 232+19.77	P.C.C. 234+86.58(B)	P.C.C. 250+39.73
194+22.26(A)	194+22.26(A)	P.T. 204+07.84(B)	218+61.63(A)	218+61.53(A)	P.T. 223+89.08(B)	223+89.01(A)	234+86.40(A)	234+86.40(A)	P.T. 253+06.49(B)
204+07.82(A)	204+07.82	204+07.82(A)	218+61.53(A)	P.C.C. 221+22.37	223+89.01(A)		P.C.C. 250+39.73	P.C.C. 250+39.73	253+06.36(A)
Δ = 4°30' Lt.	Δ = 23°34' Lt.	Δ = 4°30' Lt.	Δ = 8°00' Rt.	Δ = 10°26' Rt.	Δ = 8°00' Rt.	L = 28°00' Lt.	Δ = 10°00' Lt.	Δ = 77°40' Lt.	Δ = 10°00' Lt.
D = 2,249.8'	D = 3°00'	D = 2,249.8'	D = 2,998.47'	D = 4°00'	D = 2,998.47'	D = 32°00'	D = 3,748.7'	D = 3,748.7'	D = 3,748.7'
E = 2549.70'	E = 1909.86'	E = 2549.70'	E = 1910.20'	E = 1432.39'	E = 1910.20'	E = 179.05'	E = 1525.40'	E = 1145.52'	E = 1525.40'
T = 100.00'	T = 398.42'	T = 100.00'	T = 133.55'	T = 130.75'	T = 133.58'	T = 44.64'	T = 133.72'	T = 522.44'	T = 133.72'
L = 200.02'	L = 788.56'	L = 200.02'	L = 269.71'	L = 269.64'	L = 269.71'	L = 87.50'	L = 269.76'	L = 1553.33'	L = 269.76'