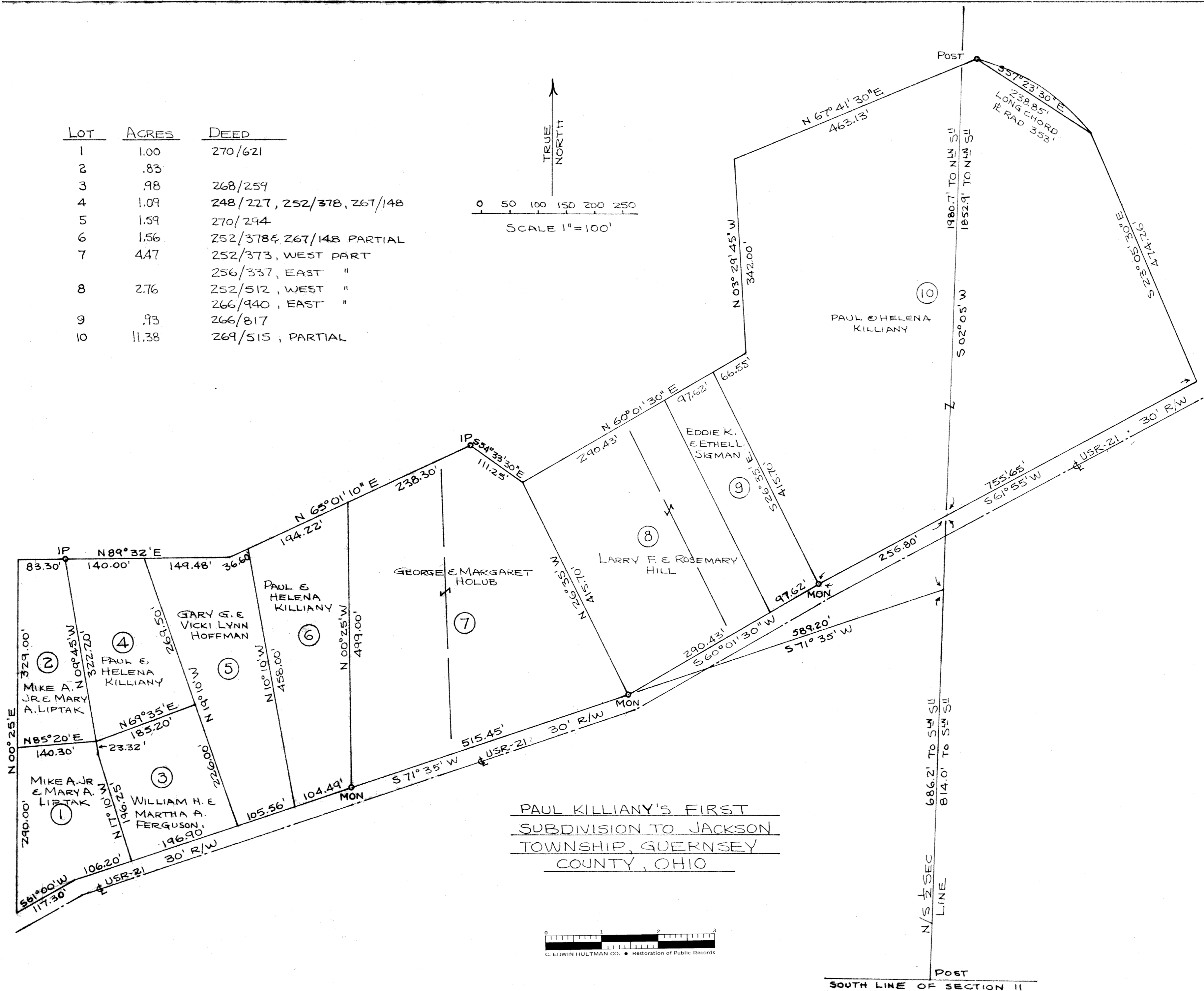
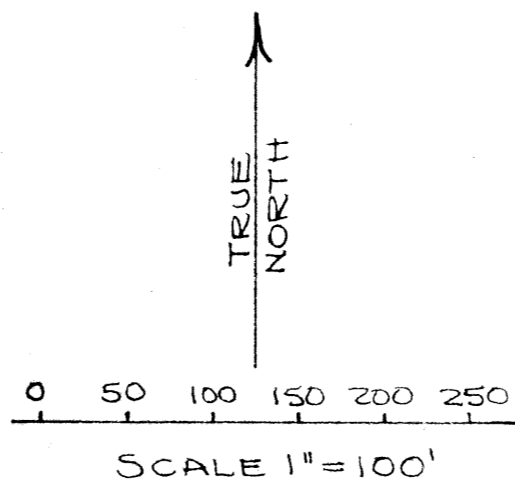


LOT	ACRES	DEED
1	1.00	270/621
2	.83	
3	.98	268/259
4	1.09	248/227, 252/378, 267/148
5	1.59	270/294
6	1.56	252/378 & 267/148 PARTIAL
7	4.47	252/373, WEST PART 256/337, EAST "
8	2.76	252/512, WEST " 266/940, EAST "
9	.93	266/817
10	11.38	269/515, PARTIAL



PAUL KILLIANY'S FIRST
SUBDIVISION TO JACKSON
TOWNSHIP, GUERNSEY
COUNTY, OHIO

0 1 2 3
C. EDWIN HULTMAN CO. - Restoration of Public Records