

COVENTRY U.S. ROUTE 22 ESTATES

SECOND REVISED PLAT
SUBDIVISION ONE
Section 9, Township 2, Range 3,
Cambridge Township, Guernsey
County, Ohio.

DEDICATION

The undersigned, being all the owners of the herein blatted land do hereby certify this plat to be an accurate representation of the 2nd Revised plat of COVENTRY ESTATES, Section One, a subdivision of 26.51 acres in Cambridge Township, Guernsey County, Ohio. The dimensions of all lots, streets and roads are chord distances. All roads and streets are hereby dedicated to public use. Easements are reserved where indicated on the plat for PUBLIC UTILITY purposes above and below the ground. Said land is part of the premises conveyed to CAMBRIDGE ENTERPRISES, INC. by D.R. Vol. 284 Pt. 28, of the Deed Records of Guernsey County, Ohio.
In witness whereof we have hereunto set our hands this 5 day of Sept 1972.

- By Robert H. ... President
- By Robert H. ... V. President
- #1 ...
- #2 ...
- #3 ...
- #4 ...
- #5 ...
- #6 ...
- #7 ...
- #8 ...
- #9 ...
- #10 ...
- #11 ...
- #12 ...
- #13 ...
- #14 ...
- #15 ...
- #16 ...
- #17 ...
- #18 ...
- #19 ...
- #20 ...
- #21 ...
- #22 ...
- #23 ...
- #24 ...
- #25 ...
- #26 ...
- #27 ...
- #28 ...
- #29 ...
- #30 ...
- #31 ...
- #32 ...
- #33 ...
- #34 ...
- #35 ...
- #36 ...
- #37 ...
- #38 ...
- #39 ...
- #40 ...

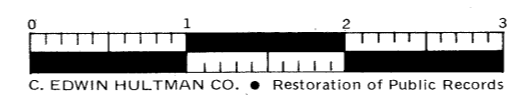
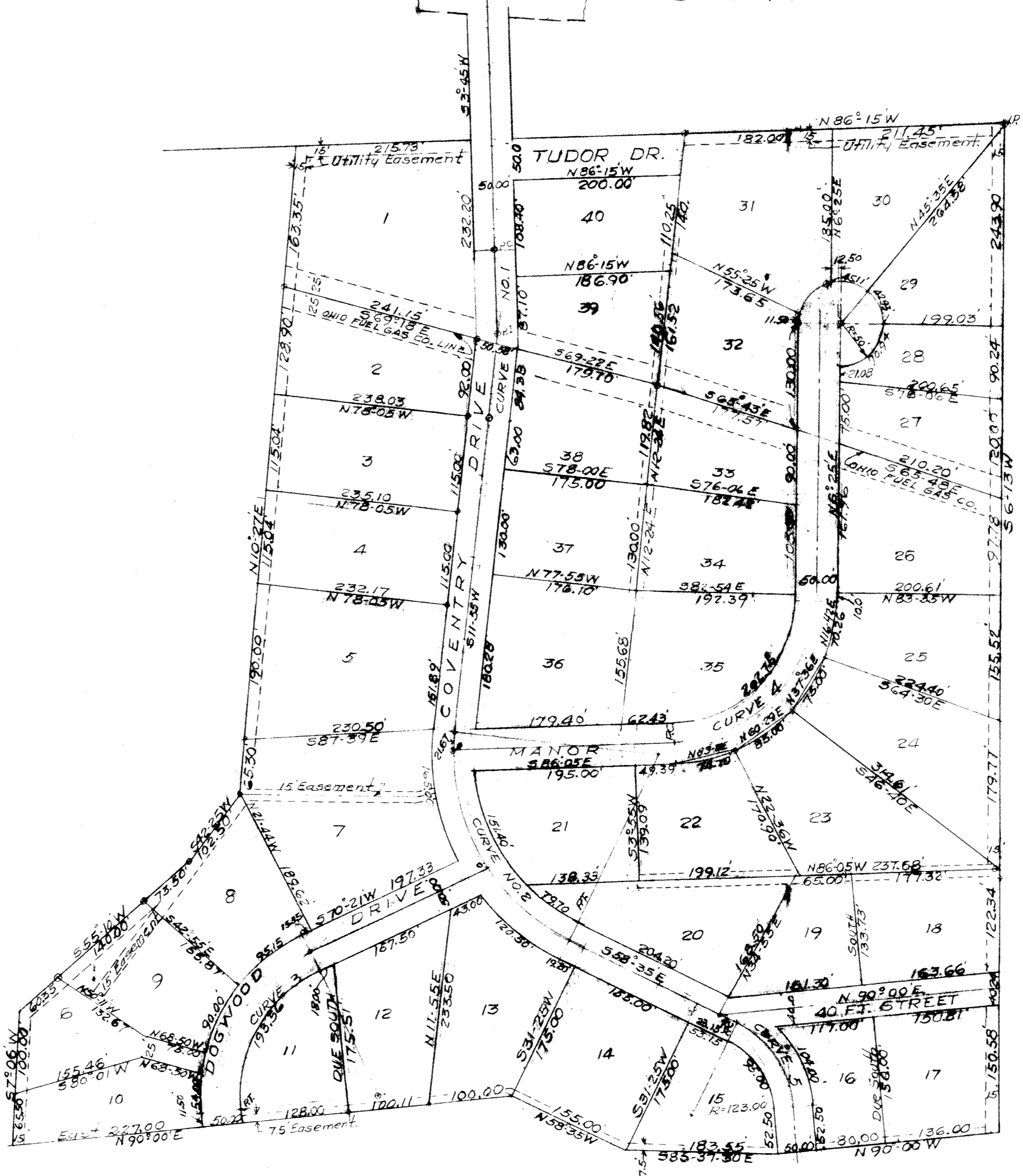
CURVE # 1
 PI=4+40.24
 Δ = 8°10' RT.
 D = 4°00'
 R = 1432.40'
 T = 102.27'
 L = 204.20'
 PC = 3+37.97'
 PT = 5+42.17'

CURVE # 2
 PI=10+88.53
 Δ = 70°30' LT.
 D = 22°55'
 R = 250.00
 T = 176.68
 L = 307.61 (arc).
 PC = 9+11.75'
 PT = 12+19.36'

CURVE # 3
 PI=3+75.52
 Δ = 70°21'
 D = 30°00'
 R = 193.00
 T = 136.02'
 L = 236.95 (arc).
 PC = 2+39.50'
 PT = 4+76.45'

CURVE # 4
 PI=4+35.35
 Δ = 87°30'
 D = 32°44'
 R = 175.00
 T = 167.55
 L = 267.23'
 PC = 2+67.80'
 PT = 5+35.03'

CURVE # 5
 PI=15+15.70
 Δ = 58°35'
 D = 45°00'
 R = 123.00
 T = 69.00'
 L = 135.75 (arc).
 PC = 14+46.70'
 PT = 15+72.45'



THE COUNTY COMMISSIONERS of Guernsey County, Ohio do hereby approve and accept this plat as dedicated this 5 day of Sept 1972. Provided however that no roads are or will be accepted until the same have been completed and approved by said commissioners.

William E. ...
John O. Mahaffey
Norman ...

GUERNSEY COUNTY ENGINEER
 The GUERNSEY COUNTY ENGINEER approves the plat of COVENTRY ESTATES Section One Second revision this 6 day of Sept 1972

Saul ... Co. Engineer.

GUERNSEY CO. AUDITOR
 The land herein blatted has been transferred this 5 day of Sept 1972.

Edward ...
 County Auditor.

26589
 GUERNSEY CO. RECORDER
 The above plat and restrictions were received for recording this 6 day of Sept 1972 at 11 AM M. in Plat Book Vol 12 Page 25 Fee 50

