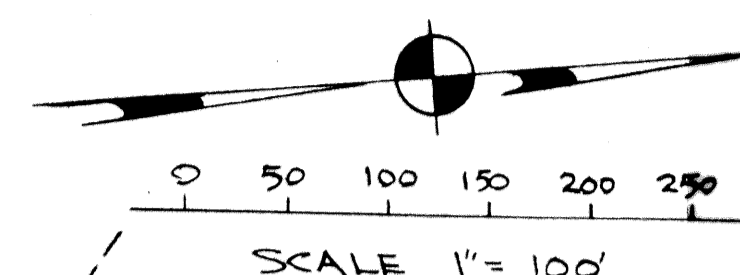


HORIZONTAL BEARINGS FOR MONUMENTS

AT A TO B N 13° 21' 30" E FOR 404.60'  
 AT C TO D S 26° 27' 22" W FOR 564.33'  
 AT D TO E S 49° 16' 20" E FOR 232.71'  
 AT E TO F S 79° 06' 52" W FOR 216.53'

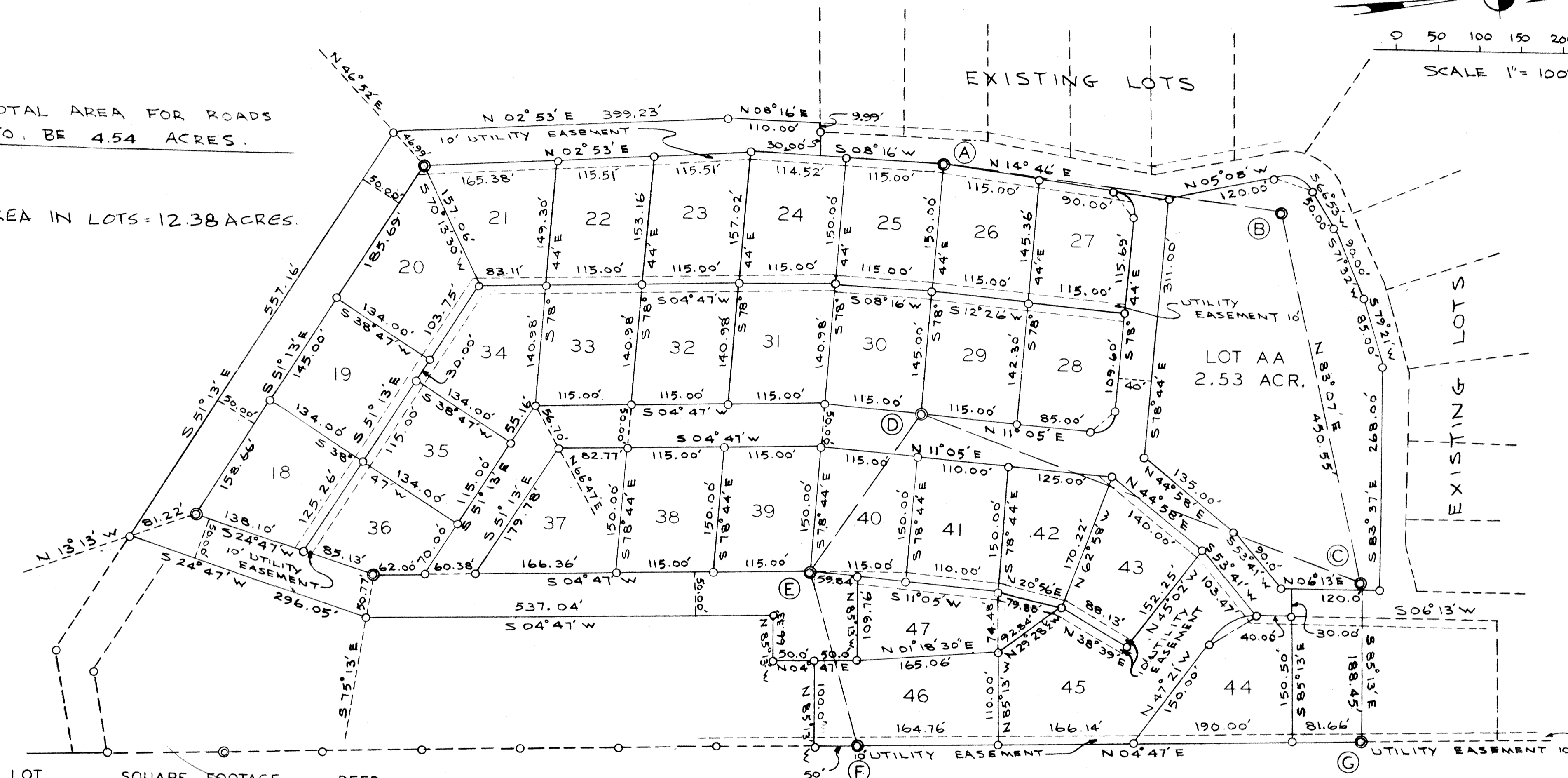
CHORD BEARINGS FOR LOTS

27. N 57° 47' E FOR 36.54'  
 28. S 33° 51' E FOR 42.46'  
 44. N 24° 56' 40" W FOR 66.73'  
 AA N 15° 59' E FOR 56.00'



TOTAL AREA FOR ROADS  
TO BE 4.54 ACRES.

AREA IN LOTS = 12.38 ACRES.



LOT	SQUARE FOOTAGE	DEED
18	19,313.66	
19	19,430	
20	21,061.10	
21	19,031.85	
22	17,430.01	
23	17,875.67	
24	17,612.81	
25	17,250	
26	16,983.20	
27	16,333.86	
28	15,996.61	
29	16,519.75	
30	16,443.85	
31	16,212.70	
32	16,212.70	

LOT	SQUARE FOOTAGE	DEED
33	16,212.70	
34	19,649.58	
35	15,410	
36	14,245.31	
37	20,540.35	
38	17,250	
39	17,250	
40	17,250	
41	16,500	
42	16,401.67	
43	18,391.84	
44	20,048.56	
45	30,295.89	
46	17,315.55	
47	17,855.87	

BLOCK "B"  
COLONIAL HEIGHTS SUBDIVISION  
TO WESTLAND TOWNSHIP  
GUERNSEY COUNTY, OHIO