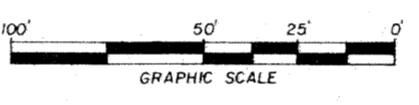
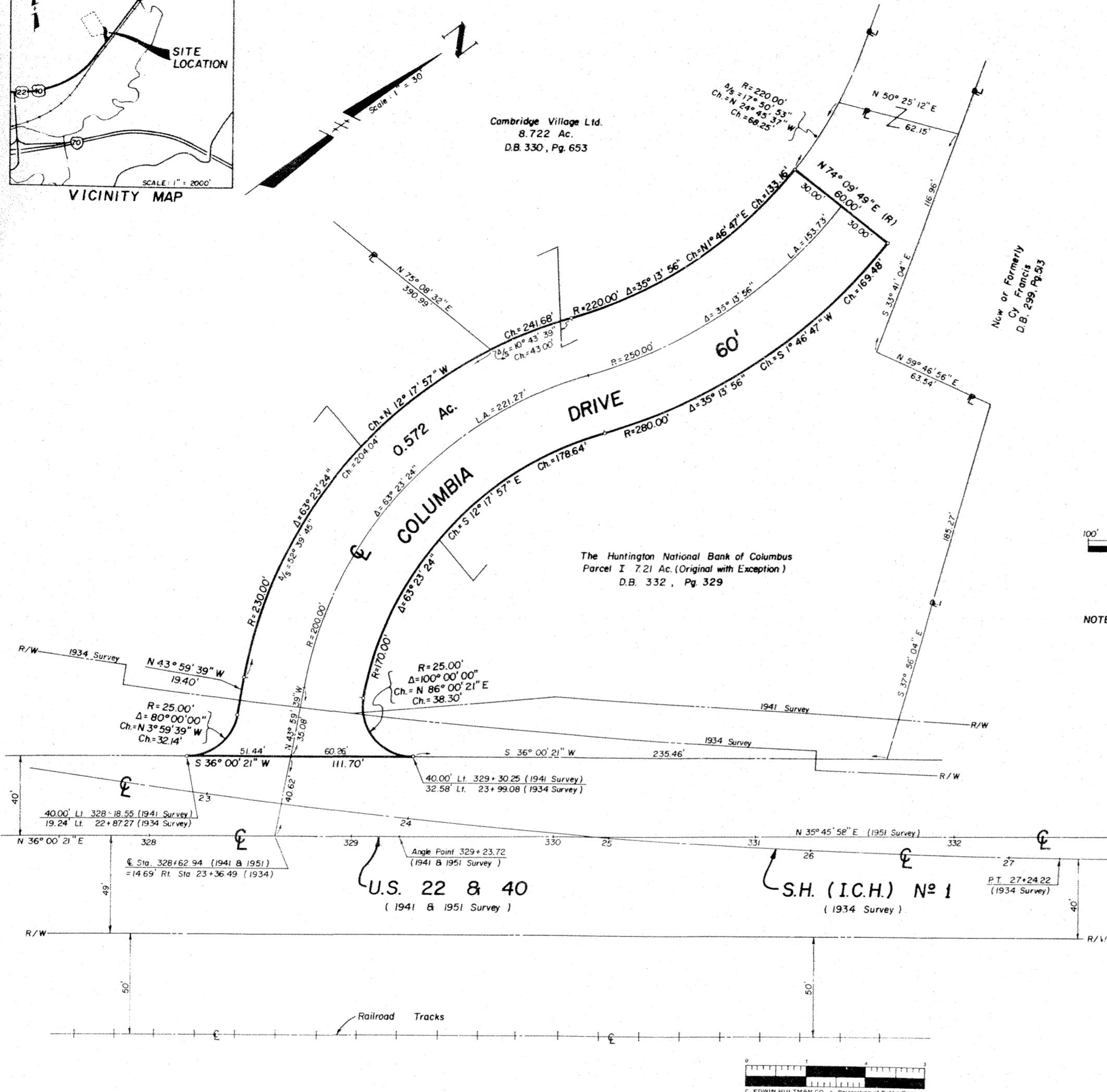


Cambridge Village Ltd.
8.722 Ac.
D.B. 330, Pg. 653



Situated in the State of Ohio, County of Guernsey, City of Cambridge, being part of Partition Lot 14, Township 2 North, Range 3 West, United States Military Lands, being a 0.572 acre tract of land out of that 8.722 acre tract of land described in a deed to CAMBRIDGE VILLAGE, LTD., of record in Deed Book 330, Page 653, Recorder's Office, Guernsey County, Ohio, said 0.572 acre tract being all of that ingress, egress easement described in said deed.

The undersigned, CAMBRIDGE VILLAGE, LTD., an Ohio Limited Partnership, by Jack L. Wallick, General Partner, owner of the land platted herein, duly authorized in the premises, does hereby certify that this plat correctly represents the DEDICATION OF COLUMBIA DRIVE and does hereby accept this plat of same and dedicates to public use as such, all or parts of, COLUMBIA DRIVE shown hereon and not heretofore dedicated.

In Witness Whereof, CAMBRIDGE VILLAGE, LTD., an Ohio Limited Partnership, by Jack L. Wallick, General Partner, has hereunto set his hand this 21st day of July 1980.

WITNESSES CAMBRIDGE VILLAGE, LTD.

Jason Whittier By Jack L. Wallick, General Partner
Jason Ross

STATE OF OHIO
COUNTY OF FRANKLIN SS

Before me, a Notary Public in and for said County, personally appeared CAMBRIDGE VILLAGE, LTD., an Ohio Limited Partnership, by Jack L. Wallick, General Partner, who acknowledged the signing of the foregoing instrument to be his free and voluntary act and deed and the free and voluntary act and deed of CAMBRIDGE VILLAGE, LTD., an Ohio Limited Partnership, for uses and purposes therein expressed.

In Witness Thereof, I have hereunto set my hand and affixed my official seal this 21st day of July 1980.

My Commission Expires April 23, 1982
Notary Public, Franklin County, Ohio

Approved this 21st day of July 1980.
Planning Commissioner, Cambridge, Ohio

Approved this 21st day of July 1980.
City Engineer, Cambridge, Ohio

Approved and accepted this 16th day of July 1980 by Ordinance No 58-80, wherein the Drive dedicated on the attached plat is accepted as such by the Council of the City of Cambridge, Ohio.

In Witness Thereof, I have hereunto set my hand and affixed my seal this 21st day of July 1980.

City Clerk, Cambridge, Ohio

Transferred this 28 day of October 1980.
Auditor, Guernsey County, Ohio

Filed for record this 29th day of October 1980.
Recorder, Guernsey County, Ohio

Recorded this 29th day of October 1980. Plat Book 2, Page 276.

Deputy Recorder

SURVEYED & PLATTED BY
BLACKBURN, GRASHEL, KOSANCHICK & ASSOC., INC.
CONSULTING ENGINEERS & SURVEYORS
2101 SOUTH HAMILTON RD., COLUMBUS, OH 43227

I do hereby certify, that we have surveyed the above premises, prepared the attached plat and that said plat is correct. All dimensions are shown in feet and decimal parts thereof. Dimensions shown along curves are chord measurements. Iron pins are indicated by the following symbol: _____

By Richard S. Grashel 5/1/80
Registered Surveyor No 6002 Date

DEDICATION OF COLUMBIA DRIVE