

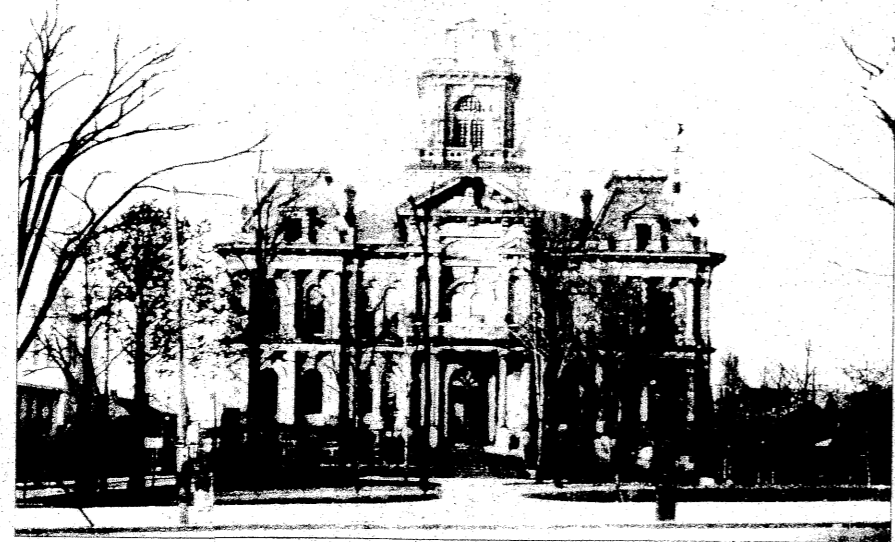
WILLIAM P. DI HART, County Auditor.



W. H. GREGG, Probate Judge.



W. V. ACHESON, County Treasurer.



GUERNSEY COUNTY COURT HOUSE, CAMBRIDGE.



ALVA B. HALL, Clerk of Court.



J. B. DOLLISON, Sheriff.



CAPT. J. C. CROSSEN, County Recorder.



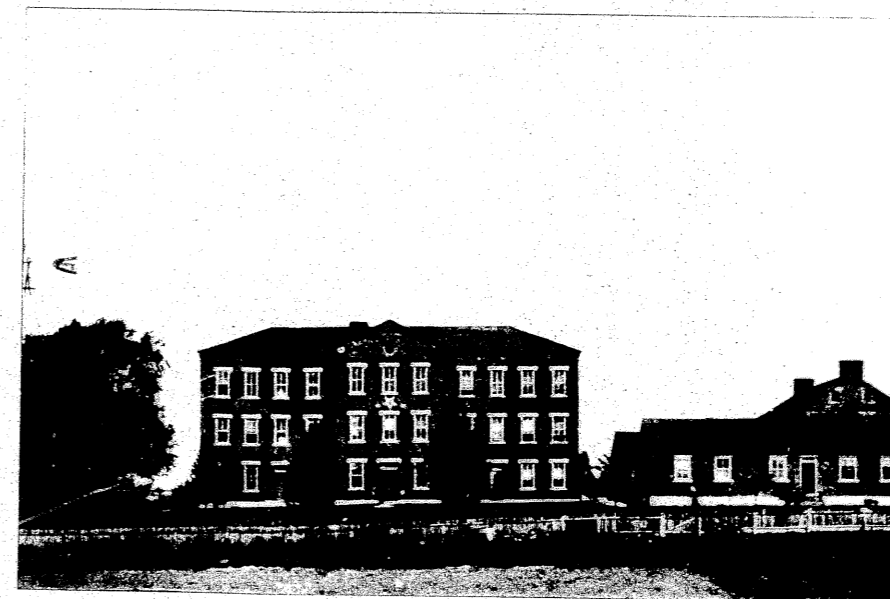
S. L. JOHNSON, Infirmary Director.



ROBERT H. BURRIS, Infirmary Director.



ALBERT WOODBURN, County Surveyor Elect.



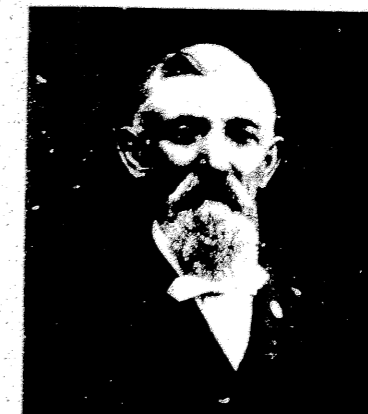
GUERNSEY COUNTY INFIRMARY.



JAMES OLIVER, Deceased.
For many years a prominent citizen of Cambridge Township.



W. V. WEBSTER, County Surveyor.



D. L. MACKEY
Prominent farmer and fruit grower.
Proprietor Walnut Ridge fruit farm.