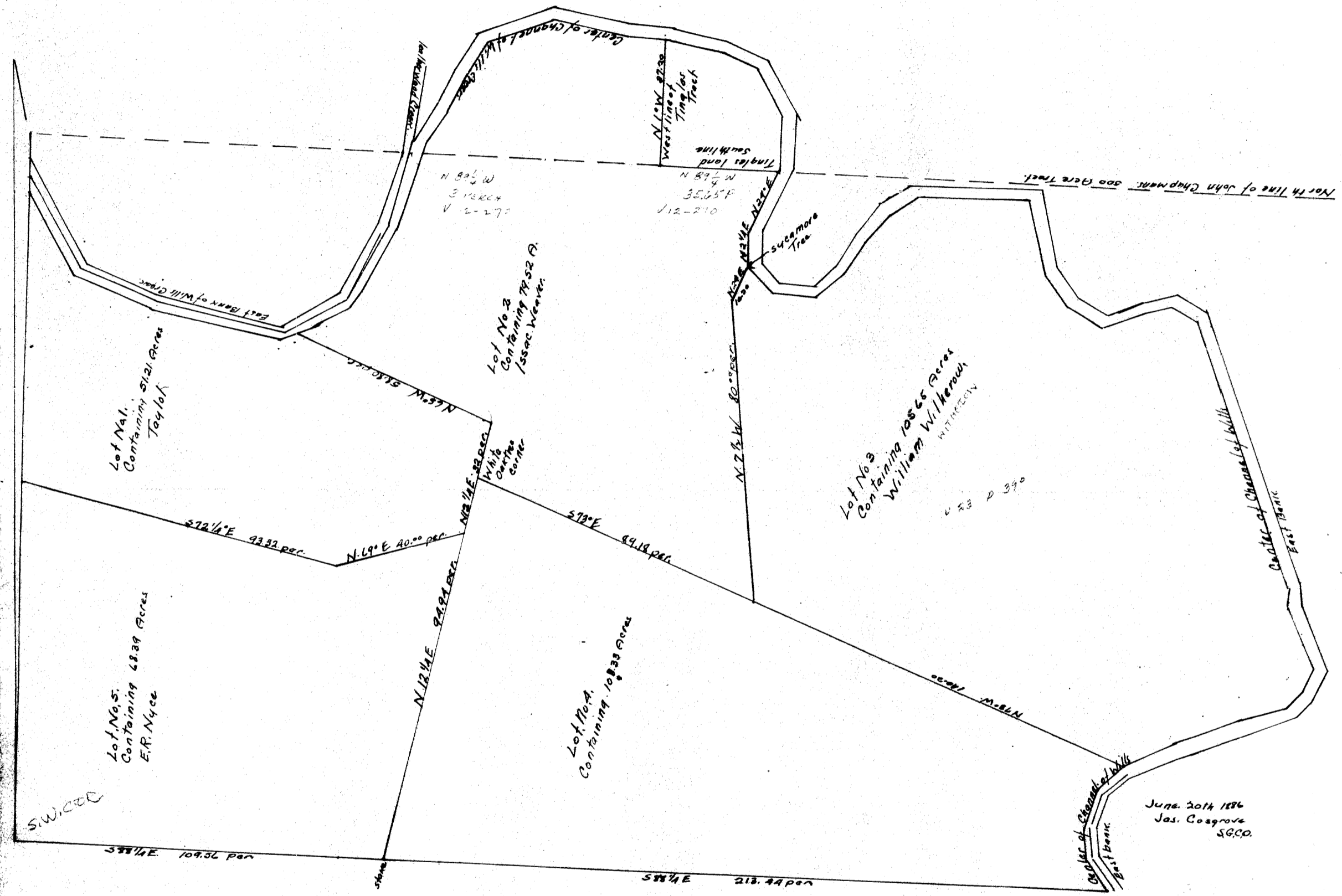
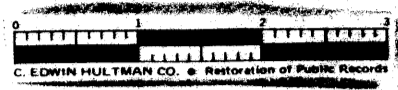


DIVISION OF 411 ACRES OF THE S W CORNER OF THE ~~34~~ FOURTH QUARTER 2ND. TWP. & 3RD RANGE



Plat of a division of 411 Acres of land in the SW. cor. of the 7th qua. 2nd Twp & R. 3. Military lands. Bounded on the South & West by lines of said gr. Twp. & on the North & East by the bank of Wills Creek. the center of the channel of said creek. & the west & south boundary lines of a certain tract of land in said gr. Twp. lately owned by Geo. R. Trugle deceased & the North line of John Chapman 500 acre tract.