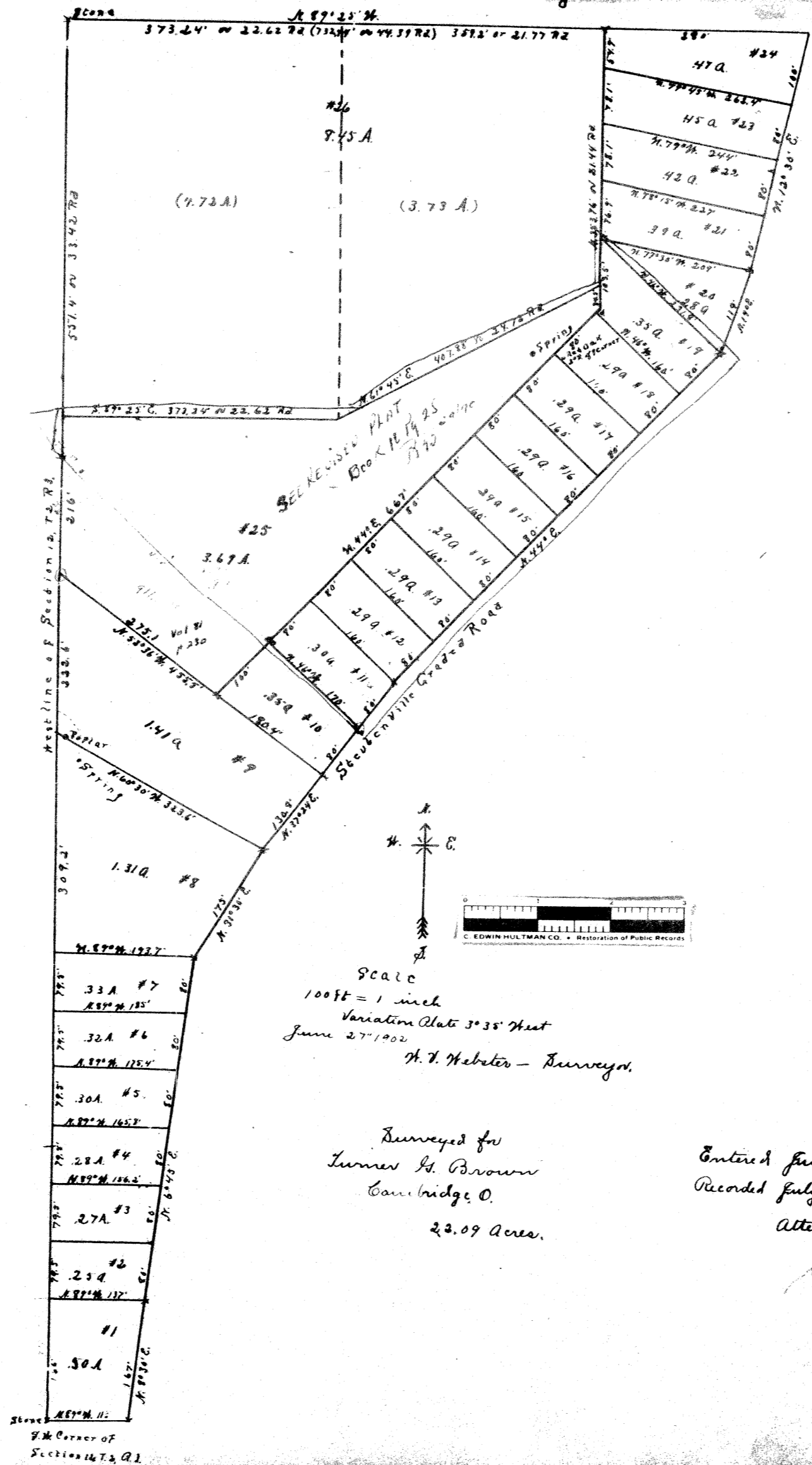


Sunset View Platted by J. H. Brown.



Scale
 100ft = 1 inch
 Variation Plat 3° 35' West
 June 27, 1902
 H. T. Webster - Surveyor.

Surveyed for
 James H. Brown
 Cambridge, O.
 22.09 Acres.

Entered July 24, 1902 at 8.5 A.M.
 Recorded July 24, 1902
 Attest J. G. Brown - Recorder.

Stone
 S.W. Corner of
 Section 14 T. 2. S. R. 1.