

CONN-B&O-RP-3

D=04.1 73. = 2.27 AC THIS SHT
49.44 AC TOTAL

CAMBRIDGE
CAMBRIDGE TWP

= 11180 R-
= 202 AC

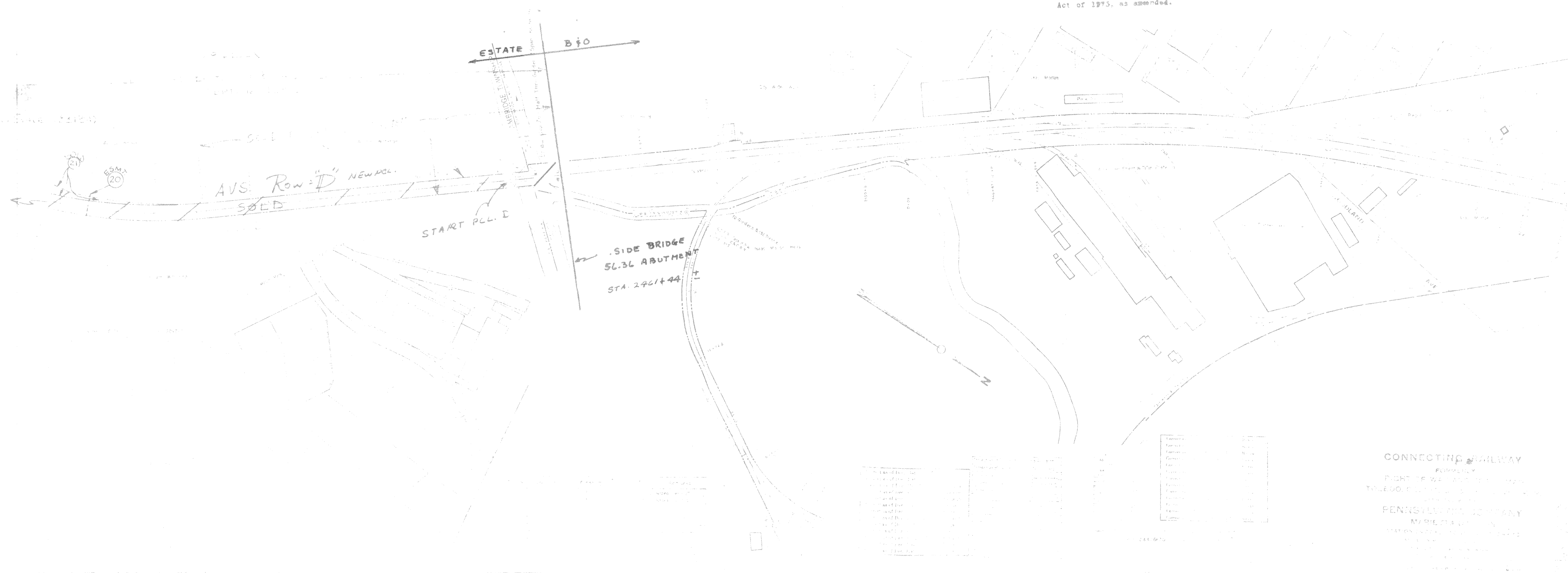
GUERNSEY COUNTY, OHIO

TOTAL THIS SHT = 2.274

CONN-B&O-RP-3

087 8299 0 47
LC. 2428-56.5

This Map is referred to in DOCUMENT No. 100-100-100-100
verified by the United States Railway Association in a
Special Court pursuant to the Regional Rail Reorganization
Act of 1973, as amended.



Slide Cabinet 3
Slide 434

12771
GUERNSEY CO. RECORD OF DEED
VOL. 374 PAGE 315

RECEIVED
1987 OCT 26 AM 11:53

RECORDED
J. J. COOPER 46.00
BY CITY RECORDS

CONNECTING RAILWAY
FORMERLY
RIGHT OF WAY AND TRACKS
TOLEDO, CLEVELAND AND CINCINNATI
RAILROAD COMPANY
PENNYSYLVANIA COMPANY
MARIETTA, OHIO
STATION AND TRACKS

11/76 CS-AME