

NOT TO SCALE

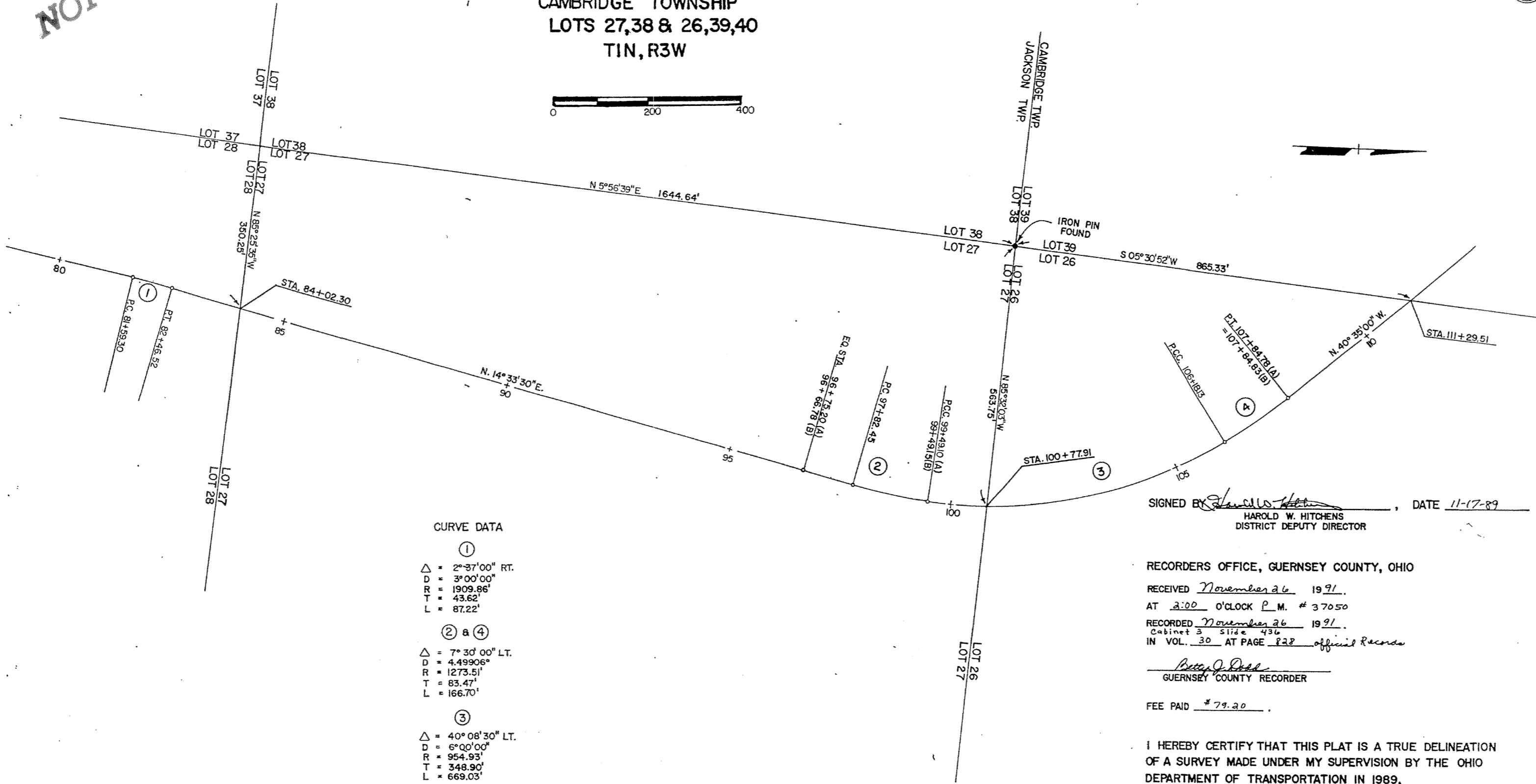
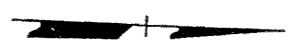
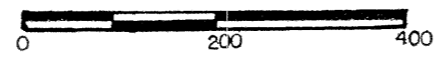
# CENTERLINE SURVEY PLAT

GUE-209-10.49  
GUERNSEY COUNTY  
JACKSON TOWNSHIP  
CAMBRIDGE TOWNSHIP  
LOTS 27,38 & 26,39,40  
T1N, R3W

CALC. BY \_\_\_\_\_  
DATE \_\_\_\_\_  
CHKD. BY \_\_\_\_\_  
DATE \_\_\_\_\_  
GUE-209-10.49

OHIO  
FHWA REGION 5

1  
6  
1  
2



CURVE DATA  
①  
Δ = 2°37'00" RT.  
D = 3°00'00"  
R = 1909.86'  
T = 43.62'  
L = 87.22'  
② & ④  
Δ = 7°30'00" LT.  
D = 4.49906°  
R = 1273.51'  
T = 63.47'  
L = 166.70'  
③  
Δ = 40°08'30" LT.  
D = 6°00'00"  
R = 954.93'  
T = 348.90'  
L = 669.03'

SIGNED BY Harold W. Hitchens, DATE 11-17-89  
HAROLD W. HITCHENS  
DISTRICT DEPUTY DIRECTOR

RECORDERS OFFICE, GUERNSEY COUNTY, OHIO  
RECEIVED November 26 1991.  
AT 2:00 O'CLOCK P.M. # 37050  
RECORDED November 26 1991.  
Cabinet 3 Shelf 436  
IN VOL. 30 AT PAGE 228 Official Records  
Betty J. Dool  
GUERNSEY COUNTY RECORDER  
FEE PAID \$79.20

I HEREBY CERTIFY THAT THIS PLAT IS A TRUE DELINEATION  
OF A SURVEY MADE UNDER MY SUPERVISION BY THE OHIO  
DEPARTMENT OF TRANSPORTATION IN 1989.  
John C. Gilchrist  
JOHN C. GILCHRIST  
REGISTERED SURVEYOR NO. 6414