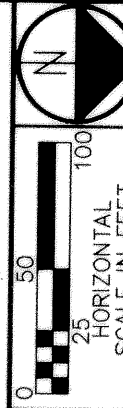


GUERNSEY CO. RECORD OF  
VOL 143 PAGE 931  
RECEIVED  
96 NOV 26 PM 2:18  
RECORDED NOV 2 1996  
KEVIN P. CHESAR  
RECORDER 4/6.04  
Cabinet 3, Side 453



# CENTERLINE SURVEY PLAT

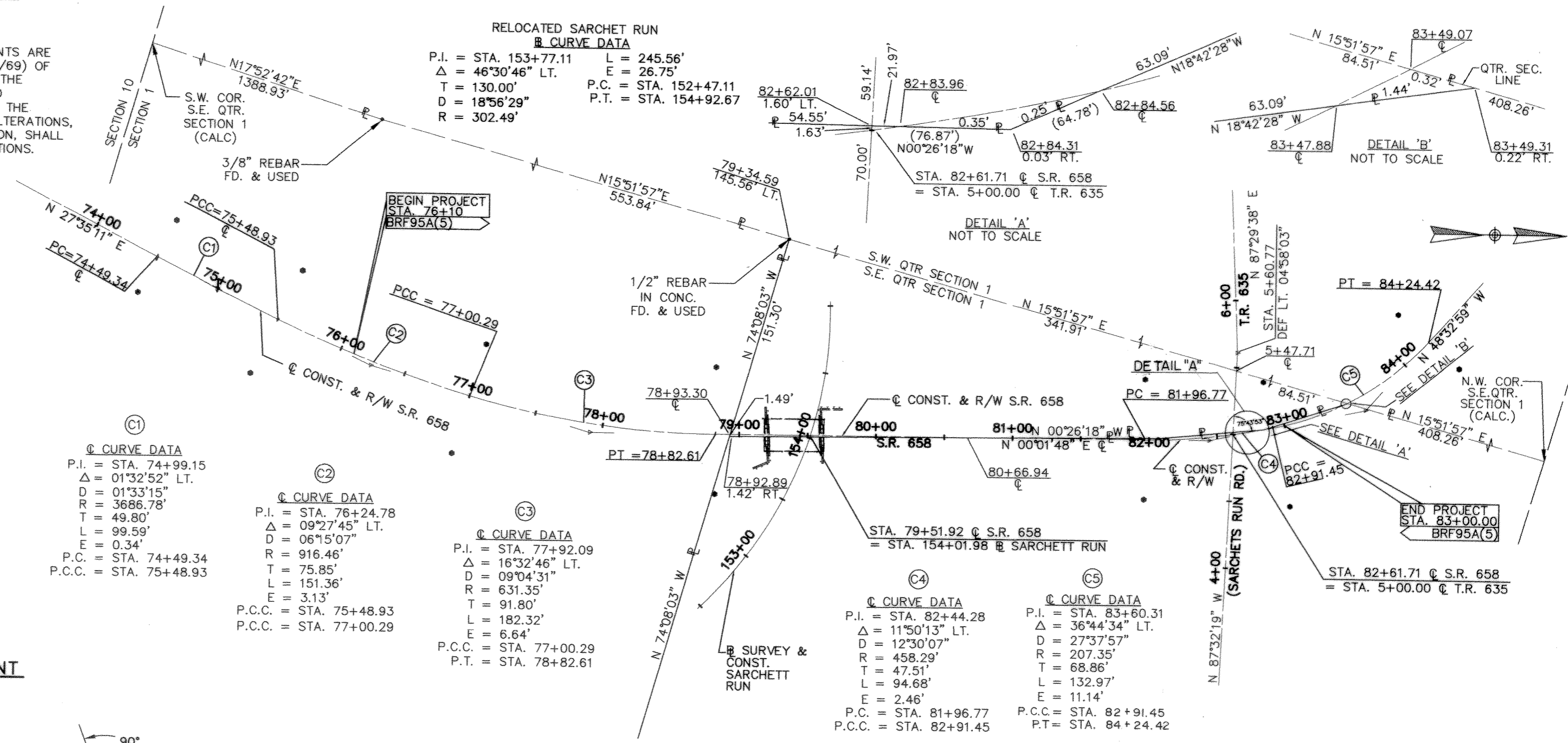
## GUE - 658 - 1.44

GUERNSEY COUNTY, OHIO  
ADAMS TWP., T-2N, R-4W  
SW QTR, SE QTR, SECTION 1

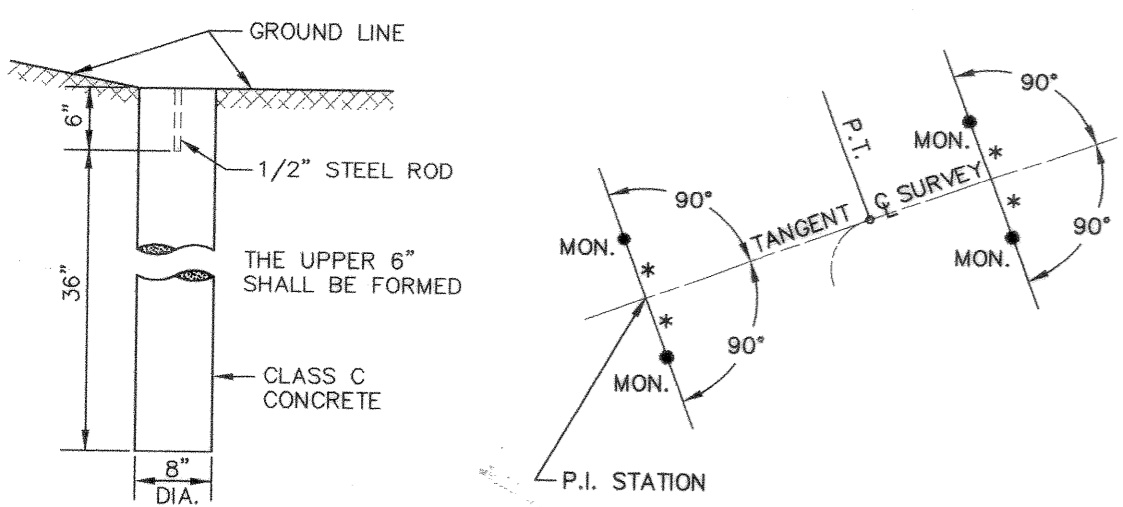
STATION	OFFSET
P.C. STA. 74+49.34	30.00' LT. & RT.
P.C.C. STA. 75+48.93	40.00' LT. & 45.00' RT.
P.C.C. STA. 77+00.29	40.00' LT. & 45.00' RT.
P.T. STA. 78+82.61	50.00' LT. & 45.00' RT.
P.C. STA. 81+96.77	45.00' LT. & RT.
P.C.C. STA. 82+91.45	35.00' LT. & 60.00' RT.
P.T. STA. 84+24.42	30.00' LT. & RT.
TOTAL = 14	

● INDICATES CENTERLINE REFERENCE MONUMENT TO BE SET.

CENTERLINE MONUMENTS AND CENTERLINE REFERENCE MONUMENTS ARE SHOWN ON STANDARD CONSTRUCTION DRAWING MC-1 (REV. 6/13/69) OF THE OHIO DEPARTMENT OF TRANSPORTATION. THE PLACING OF THE MONUMENTS SHALL BE UNDER THE DIRECTION OF A REGISTERED PROFESSIONAL SURVEYOR AND ARE TO BE SET, AS SHOWN, BY THE HIGHWAY CONTRACTOR AT THE TIME OF CONSTRUCTION. ANY ALTERATIONS, WITH PRIOR APPROVAL OF THE DEPARTMENT OF TRANSPORTATION, SHALL BE NOTED AND O.D.O.T. SHALL BE NOTIFIED OF THE NEW LOCATIONS.



### DETAIL FOR SETTING MONUMENT



**BASIS FOR BEARINGS:**

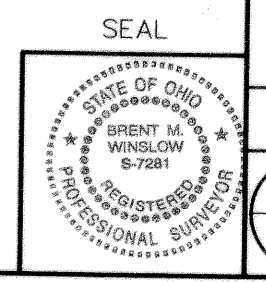
ALL BEARINGS SHOWN ARE FOR PROJECT USE ONLY. THESE BEARINGS ARE TO AN ASSUMED MERIDIAN AND ARE USED TO DELINEATE ANGLES ONLY.

NOT TO SCALE

RECEIVED \_\_\_\_\_, 19\_\_\_\_  
 RECORDED \_\_\_\_\_, 19\_\_\_\_  
 BOOK \_\_\_\_\_ PAGE \_\_\_\_\_  
 COUNTY RECORDER

I HEREBY CERTIFY THAT THIS PLAT IS A TRUE DELINEATION OF A SURVEY MADE FOR THE OHIO DEPARTMENT OF TRANSPORTATION IN 1992, BY ms consultants, inc.

*Brent M. Winslow* DATE 11/13/95  
 REGISTERED PROFESSIONAL SURVEYOR



FEDERAL PROJECT NO. BRF95A(5)  
 STATE PROJECT NO. 052730

CENTERLINE SURVEY PLAT

GUE-658-1.44