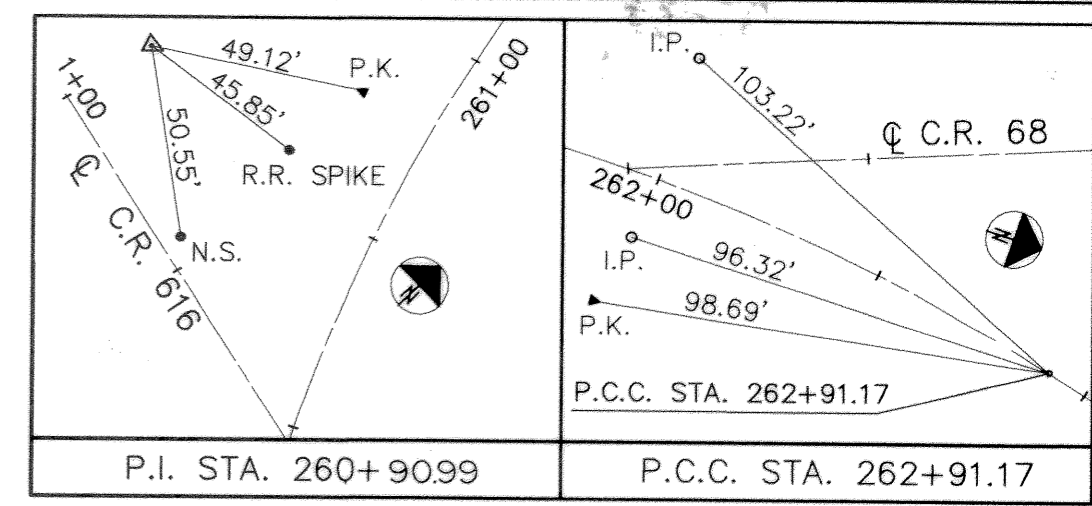
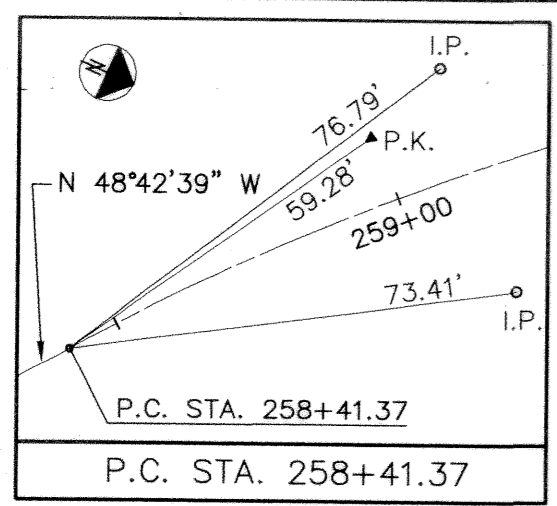


76985
 GUERNSEY CO. RECORD OF DEEDS
 VOL. 113 PAGE 937
 26 NOV 26 PM 2:19
 NOV 27 1995
 CHESAR
 ORDER

CENTERLINE SURVEY PLAT

GUE-658-4.92

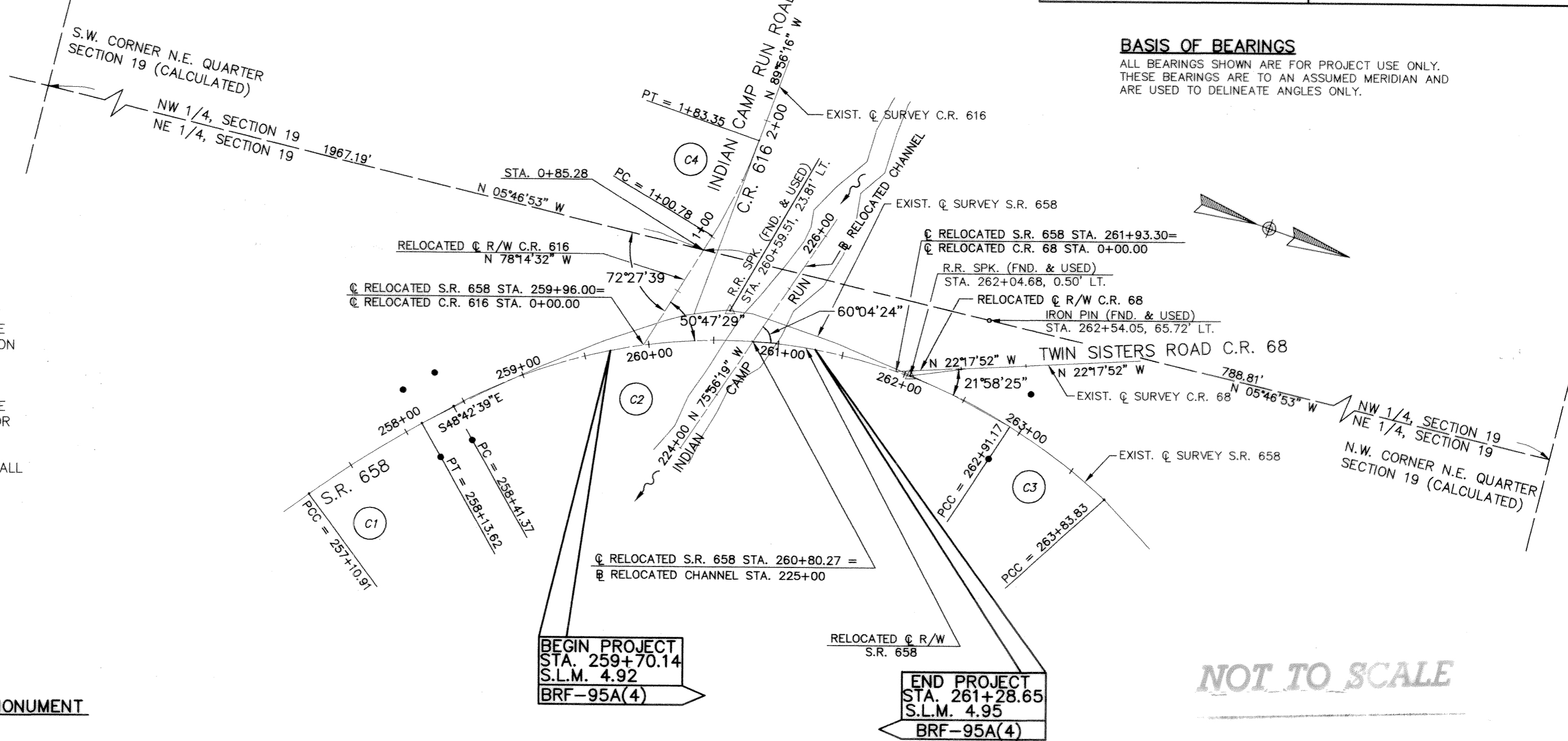
GUERNSEY COUNTY
 KNOX TOWNSHIP, T-3N, R-4W
 NW 1/4, NE 1/4, SECTION 19



CENTERLINE MONUMENTS ARE TO BE SET DURING CONSTRUCTION AT THE FOLLOWING STATIONS AT A TOLERANCE OF ± 0.02 FT.

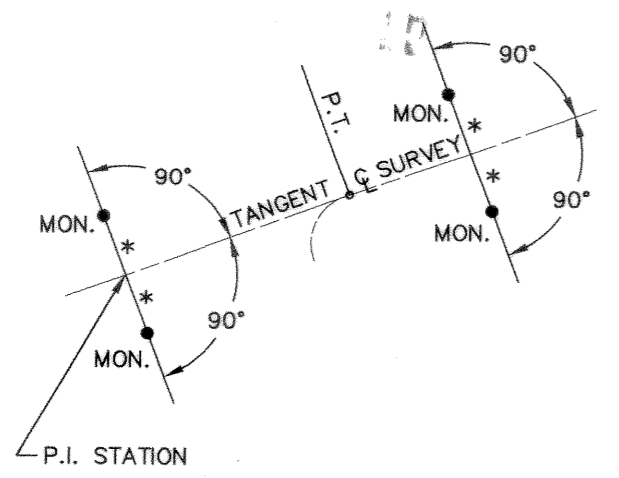
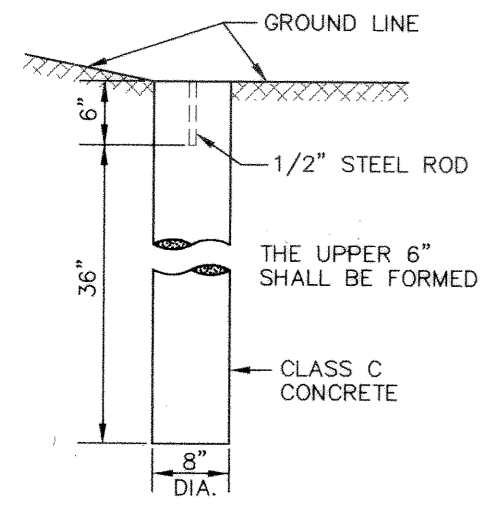
S.R. 658 C MONUMENTS	
STATION	OFFSET
P.T. STA. 258+13.62	30.00' LT. & RT.
P.C. STA. 258+41.37	30.00' LT. & RT.
P.C.C. STA. 262+91.17	30.00' LT. & RT.
TOTAL = 6	

● INDICATES CENTERLINE REFERENCE MONUMENT TO BE SET.
 CENTERLINE MONUMENTS AND CENTERLINE REFERENCE MONUMENTS ARE SHOWN ON STANDARD CONSTRUCTION DRAWING MC-1 (REV. 6/13/69 OF) OF THE OHIO DEPARTMENT OF TRANSPORTATION. THE PLACING OF THE MONUMENTS SHALL BE UNDER THE DIRECTION OF A REGISTERED PROFESSIONAL SURVEYOR AND ARE TO BE SET, AS SHOWN BY THE HIGHWAY CONTRACTOR AT THE TIME OF CONSTRUCTION. ANY ALTERATIONS, WITH PRIOR APPROVAL OF THE DEPARTMENT OF TRANSPORTATION, SHALL BE NOTED AND O.D.O.T. SHALL BE NOTIFIED OF THE NEW LOCATIONS.



BASIS OF BEARINGS
 ALL BEARINGS SHOWN ARE FOR PROJECT USE ONLY. THESE BEARINGS ARE TO AN ASSUMED MERIDIAN AND ARE USED TO DELINEATE ANGLES ONLY.

DETAIL FOR SETTING MONUMENT



C REFERENCE MONUMENT
 OHIO DEPARTMENT OF TRANSPORTATION
 STANDARD CONSTRUCTION DRAWING MC-1

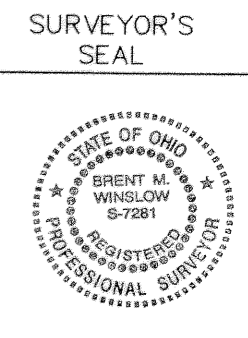
TYPICAL REFERENCE
 * = OFFSET DISTANCE, SEE TABLE

EXISTING CURVE DATA	PROPOSED CURVE DATA	EXISTING CURVE DATA	PROPOSED CURVE DATA
EXIST. C. S.R. 658 P.I. STA. 257+62.33 $\Delta = 6^{\circ}53'08''$ RT. $D_c = 6^{\circ}42'15''$ $R = 854.64'$ $L = 102.71'$ $T = 51.42'$ $e = 1.55'$ $e = N.C.$ P.C.C. = STA. 257+10.91 P.T. = STA. 258+13.62	RELOCATED C. S.R. 658 P.I. STA. 260+90.99 $\Delta = 61^{\circ}50'35''$ RT. $D_c = 13^{\circ}44'56''$ $R = 416.73'$ $L = 449.80'$ $T = 249.62'$ $E = 69.04'$ $e = 0.06$ FT./FT. P.C. = STA. 258+41.37 P.C.C. = STA. 262+91.17	EXIST. C. S.R. 658 P.I. STA. 263+37.62 $\Delta = 10^{\circ}12'50''$ RT. $D_c = 11^{\circ}01'25''$ $R = 519.75'$ $L = 92.66'$ $T = 46.45'$ $E = 2.07'$ $e = N.C.$ P.C.C. = STA. 262+91.17 P.C.C. = STA. 263+83.83	RELOCATED C. C.R. 616 P.I. STA. 1+42.21 $\Delta = 11^{\circ}41'44''$ LT. $D_c = 14^{\circ}09'53''$ $R = 404.50'$ $L = 82.57'$ $T = 41.43'$ $E = 2.12'$ $e = N.C.$

I HEREBY CERTIFY THAT THIS PLAT IS A TRUE DELINEATION OF A SURVEY MADE FOR THE OHIO DEPARTMENT OF TRANSPORTATION IN 1992 BY ms consultants, inc.

Brent M. Winslow 10/6/95
 REGISTERED SURVEYOR NO. 7281 DATE

RECEIVED _____, 1995
 RECORDED _____, 1995
 BOOK _____ PAGE _____
 GUERNSEY COUNTY RECORDER



FEDERAL PROJECT NO. BRF-95A(4)
 STATE JOB NO. (SUN)052740
 CENTERLINE SURVEY PLAT
 GUE-658-4.92
 29/32
 SCALE IN FEET
 0 50 100