

DEDICATION AND ACKNOWLEDGEMENT:

I the undersigned, Harold Kidd, president of Cambridge Senior Community Inc. the owner of the real estate shown, hereby certify that I have caused the same to be surveyed and platted into lots and roadways as shown, and that said lots are numbered 1 to 7, inclusive, and that the roadway, Velmore Drive, along said subdivision, as depicted, is hereby dedicated to the public for use as such.

This subdivision and plat are subject to the "Amended Declaration of Easements, Covenants, Conditions and Restrictions for Velmore Estates Subdivision" as filed and of record in the office of Recorder of Guernsey County Ohio, and appearing in Official Records Volume 157 Page 703. And such Easements, Covenants, Conditions and Restrictions shall run with the land and shall be applicable to all subsequent conveyances, regardless of whether or not the same are specifically mentioned therein.

We further certify that there are no unpaid taxes or special assessments against the land contained in this plat.

Witnesses: William Winter Owner: Harold Kidd
Shelby Kiser Harold Kidd, president
Cambridge Senior Community

STATE OF OHIO, COUNTY OF GUERNSEY, SS:

BE IT REMEMBERED, That on this 6 day of May, 1997, before me, A notary public in and for said county, personally appeared Cambridge Senior Community Inc. by and through Harold Kidd, president, who executed the foregoing instrument and acknowledged that he did sign the same and that it was his free act and deed.

IN TESTIMONY WHEREOF, I have hereunto subscribed my name and affixed my notarial seal on the day and year last aforesaid.

Notary Public

My commission expires: 12/31/2000

ACCEPTANCE: COMMISSIONERS OF GUERNSEY COUNTY, OHIO

Accepted and approved under the Ohio Revised Code 711.08 in that at least minimum specifications for subdivision thoroughfares and drainage must be met before application under Ohio Revised Code section 711.091 is made.

Dated: 5/10/97 Commissioner
 Dated: 5-27-97 Commissioner
 Dated: 5/27/1997 Commissioner

APPROVAL: GUERNSEY COUNTY DISTRICT BOARD OF HEALTH

Approved this 2 day of April 1997

John Bennett, Health Commissioner

APPROVAL: COUNTY OF GUERNSEY, ENGINEER

Approved this 21st day of May 1997

Delmar George, County Engineer

APPROVAL: CITY OF CAMBRIDGE, ENGINEER

Approved this 6 day of May 1997

Jeannette Wierzbicki, City Engineer

APPROVAL: CITY OF CAMBRIDGE, PLANNING AND ZONING COMMISSION

Approved this day of May 1997

Stephen Eyan, Chairperson

Transferred this 2 day of June 1997 Tony Brown

Tony Brown, Auditor

Filed for record this 11th day of June 1997 Colleen Wheatley

Colleen Wheatley, Recorder

Recorded this 11th day of June 1997 in Cabinet 3 Slide 458

CERTIFICATE OF SURVEYOR:

I hereby certify that at the direction of Harold Kidd, owner of the real estate shown I surveyed and platted 6.000 acres of the same into lots and 0.710 acres into roadways for a total of 6.710 acres as shown. Said lots have been numbered 1 to 7, inclusive, and the foregoing real estate has been named Velmore Estates Subdivision, and the dimensions are given in feet and decimal parts thereof. Iron pins are placed as shown for the regulation of future surveys.

Steven L. Gardner PS# 6884

3-28-97

Date

Velmore Estates Subdivision

6.710 Acres S.E. Quarter Section 8 Twp 2N Range 3W USML

Cambridge Senior Community Inc. OR Volume 125 Page 817 AP# 06-08987.004

City of Cambridge, Guernsey County, Ohio

Cambridge Senior Community Inc.
38 - 226

Cambridge Senior Community Inc.
378 - 872

9700081531
Filed for Record in
GUERNSEY COUNTY, OHIO
COLLEEN WHEATLEY
On 06-11-1997 At 01:43 pm.
PLAT 20.00
Book OR Vol. 157 Pg. 712 - 712

TRANSFER NOT
NECESSARY

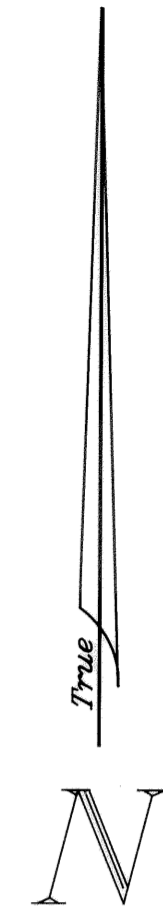
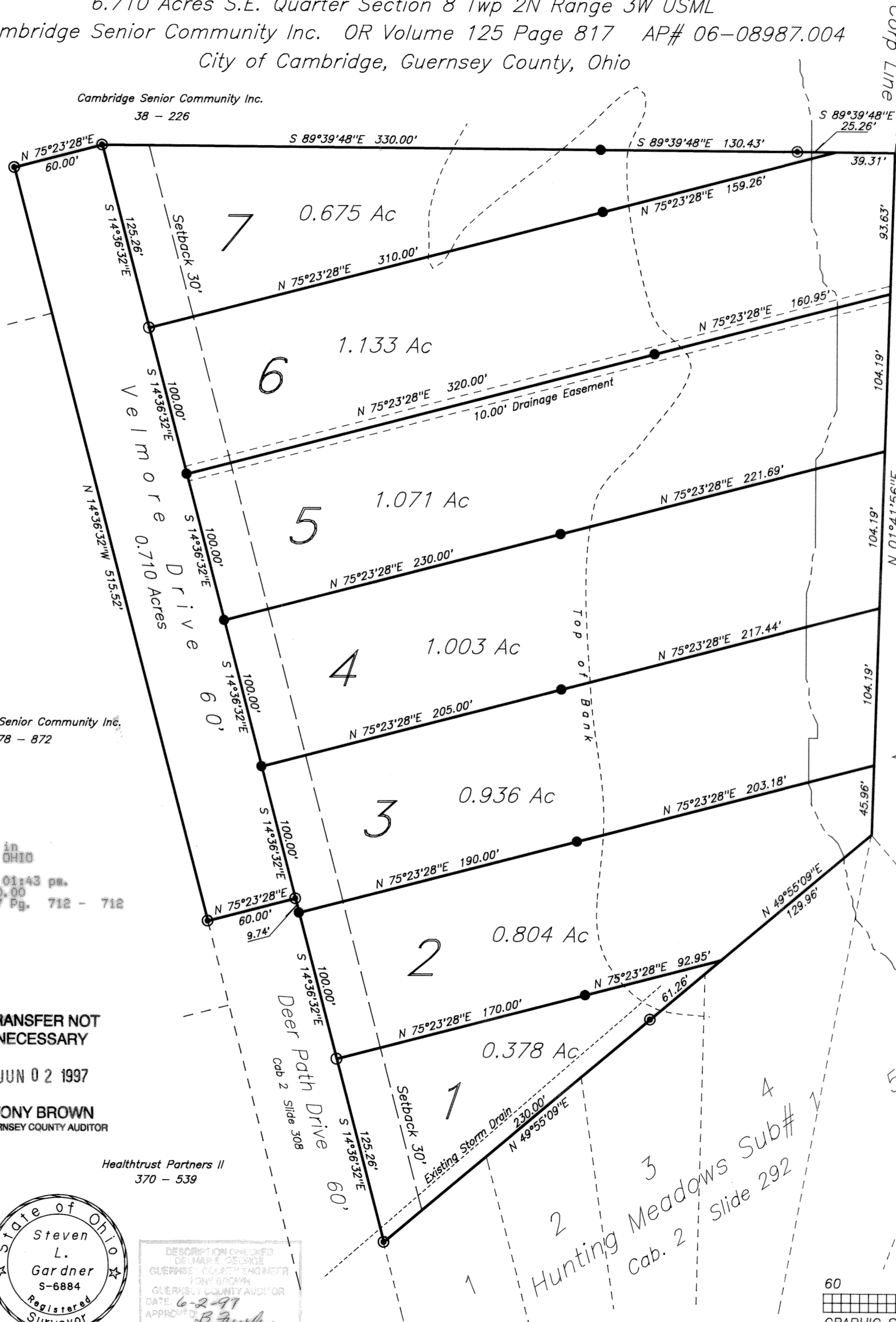
JUN 02 1997

TONY BROWN
GUERNSEY COUNTY AUDITOR

Healthtrust Partners II
370 - 539



DESCRIPTION PREPARED BY
DELMAR E. GEORGE
GUERNSEY COUNTY ENGINEER
APPROVED BY
TONY BROWN
GUERNSEY COUNTY AUDITOR
DATE 6-2-97
APPROVED BY
B. Fisher

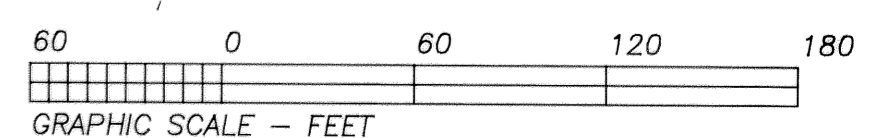


Based On A Solar Observation

Vivian B. Hutchison
384 - 268

Legend:

- 5/8" Capped Rebar Set
- 1" Capped Rebar Set
- ⊙ 5/8" Capped Rebar Found



KIDD2.CRD VELMORE2.PL