

# CENTERLINE SURVEY PLAT

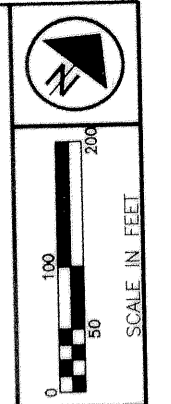
GUE-22-6.57  
 GUERNSEY COUNTY  
 CITY OF CAMBRIDGE  
 CAMBRIDGE TWP.  
 MILITARY LOT 13  
 T2N, R3W U.S.M.L.

NOT TO SCALE

## LEGEND

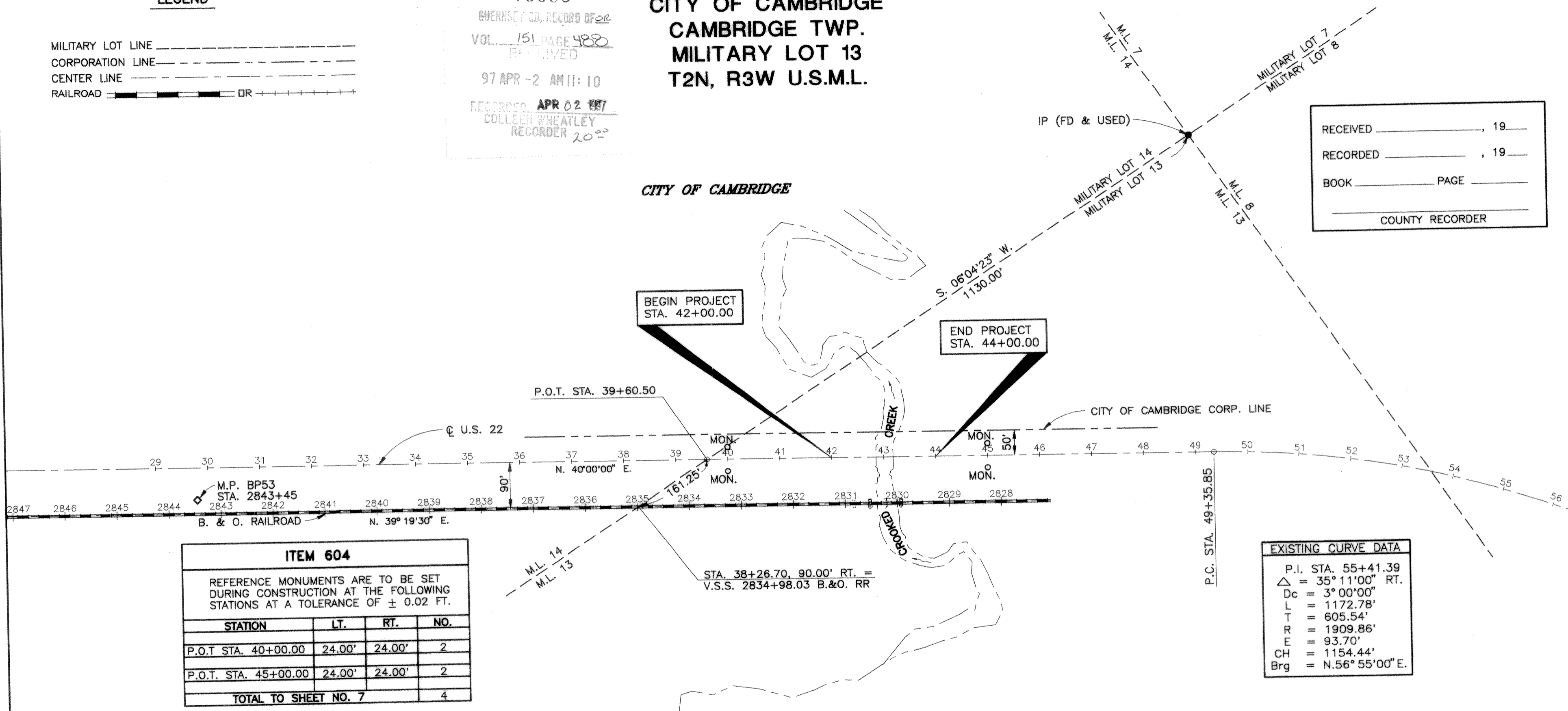
- MILITARY LOT LINE
- CORPORATION LINE
- CENTER LINE
- RAILROAD

79698  
 GUERNSEY CO., RECORD OF DEED  
 VOL. 151 PAGE 488  
 RECEIVED  
 97 APR -2 AM 11:10  
 RECORDED APR 02 1997  
 COLLEEN WHEATLEY  
 RECORDER 20<sup>00</sup>



FEDERAL PROJECT NO. BRF-93A-0  
 STATE PROJECT NO. PID 11480

RECEIVED \_\_\_\_\_, 19\_\_\_\_  
 RECORDED \_\_\_\_\_, 19\_\_\_\_  
 BOOK \_\_\_\_\_ PAGE \_\_\_\_\_  
 COUNTY RECORDER \_\_\_\_\_



**ITEM 604**

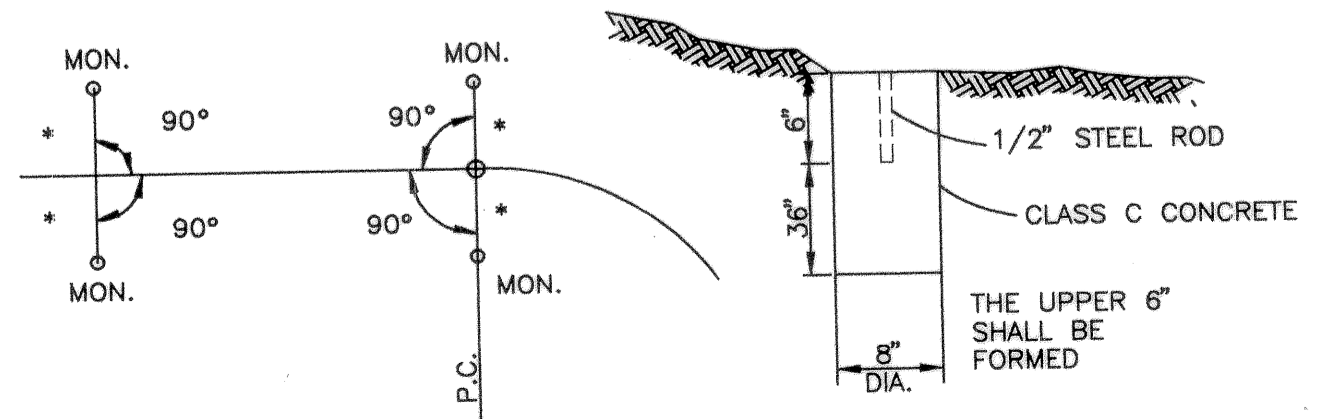
REFERENCE MONUMENTS ARE TO BE SET DURING CONSTRUCTION AT THE FOLLOWING STATIONS AT A TOLERANCE OF ± 0.02 FT.

| STATION              | LT.    | RT.    | NO. |
|----------------------|--------|--------|-----|
| P.O.T. STA. 40+00.00 | 24.00' | 24.00' | 2   |
| P.O.T. STA. 45+00.00 | 24.00' | 24.00' | 2   |
| TOTAL TO SHEET NO. 7 |        |        | 4   |

**EXISTING CURVE DATA**

P.I. STA. 55+41.39  
 $\Delta = 35^\circ 11'00''$  RT.  
 $D_c = 3^\circ 00'00''$   
 $L = 1172.78'$   
 $T = 605.54'$   
 $R = 1909.86'$   
 $E = 93.70'$   
 $CH = 1154.44'$   
 $Brg = N.56^\circ 55'00'' E.$

### DETAIL FOR SETTING MONUMENTS



**TYPICAL REFERENCE**  
 \* = OFFSET DIST., SEE TABLE

**☉ REFERENCE MONUMENT**

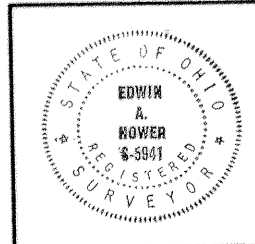
### CAMBRIDGE TWP.

CENTERLINE REFERENCE MONUMENTS ARE SHOWN ON STANDARD CONSTRUCTION DRAWING, MC-1 (REV 6-13-69) OF THE OHIO DEPARTMENT OF TRANSPORTATION. THE PLACING OF THE MONUMENTS SHALL BE UNDER THE DIRECTION OF A REGISTERED SURVEYOR AND ARE TO BE SET, AS SHOWN, BY THE HIGHWAY CONTRACTOR AT THE TIME OF CONSTRUCTION. ANY ALTERNATIONS, WITH PRIOR APPROVAL OF THE DEPARTMENT OF TRANSPORTATION, SHALL BE NOTED AND ODOT SHALL BE NOTIFIED OF THE NEW LOCATIONS.

### BASIS FOR BEARINGS:

ALL BEARINGS SHOWN ARE FOR PROJECT USE ONLY. THE CENTER LINE BEARING IS ASSUMED BASED OF SUPPLEMENTAL ALIGNMENT MUS. 22 (27.81-27.83) GUE. 22 (0.00-3.91) AND ARE USED TO DELINEATE ANGLES ONLY.

I HEREBY CERTIFY THAT THIS PLAT IS A TRUE DELINEATION OF A SURVEY MADE FOR THE OHIO DEPARTMENT OF TRANSPORTATION IN 1995 BY ERIKSSON ENGINEERING LIMITED  
 Edwin A. Howe  
 REGISTERED SURVEYOR NO. 5941  
 DATE 9/15/95



CENTERLINE SURVEY PLAT

GUE-22-6.57

3585CLP