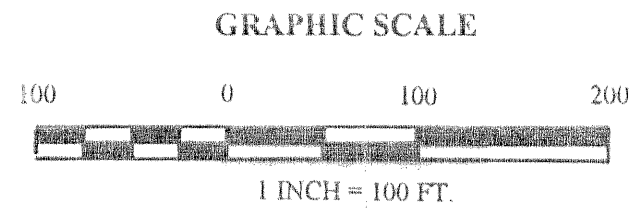


ADAMS TOWNSHIP

WESTLAND TOWNSHIP

WHISPERING PINES PHASE II

WESTLAND TOWNSHIP
GUERNSEY COUNTY, OHIO



N

SITUATED IN:
The State of Ohio, County of Guernsey,
Township of Westland, and being a part
of the Second Quarter, T1N, R4W,
U.S. Military District

BASIS OF BEARINGS:
Bearing of N84°34'23"W on the north line
of Lots 2 & 3 of Whispering Pines Addition
as recorded on Plat Slide 461 of the Plat
Records of Guernsey County is assumed
for angle calculations.

LEGEND

- IRON PIN SET, 5/8" X 30" REBAR CAPPED HUNNELL 6889
- IRON PIN FOUND CAPPED NEWCOME 7321
- ⊙ IRON PIPE FOUND
- ▲ SURVEY ANGLE POINT
- SUBDIVISION LINES
- LOT LINES

KENNETH & PATRICIA PARRISH
O.R. 66, PG. 711
RESIDUE

FOR VARIANCE FOR LOT 11 SETBACK CHANGE SEE
OFFICIAL RECORDS Vol. 356 PAGE 867. May 15, 2003

FOR VARIANCE FOR LOTS 9,10 SEE OFFICIAL RECORDS VOL. 430
PAGE 1922,1924 June 20, 2005

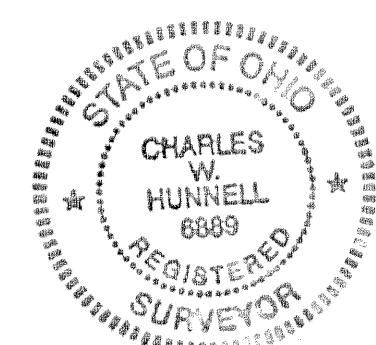
CERTIFICATE OF SURVEYOR

I hereby certify that at the direction of Kenneth D. and Patricia R. Parrish, owners of the Real Estate shown and recorded in Official Records Book 66, Page 711, I surveyed and platted 33.182 acres of the same into lots and drives as shown, that lots are numbered 1 through 14, excluding Lot 13, that the foregoing Real Estate has been named WHISPERING PINES PHASE II, that dimensions are given in feet and decimal parts thereof. Iron pins are set or found (as per legend symbols).

Charles W. Hunnell
Charles W. Hunnell, R.L.S. 6889

6-1-99
Date

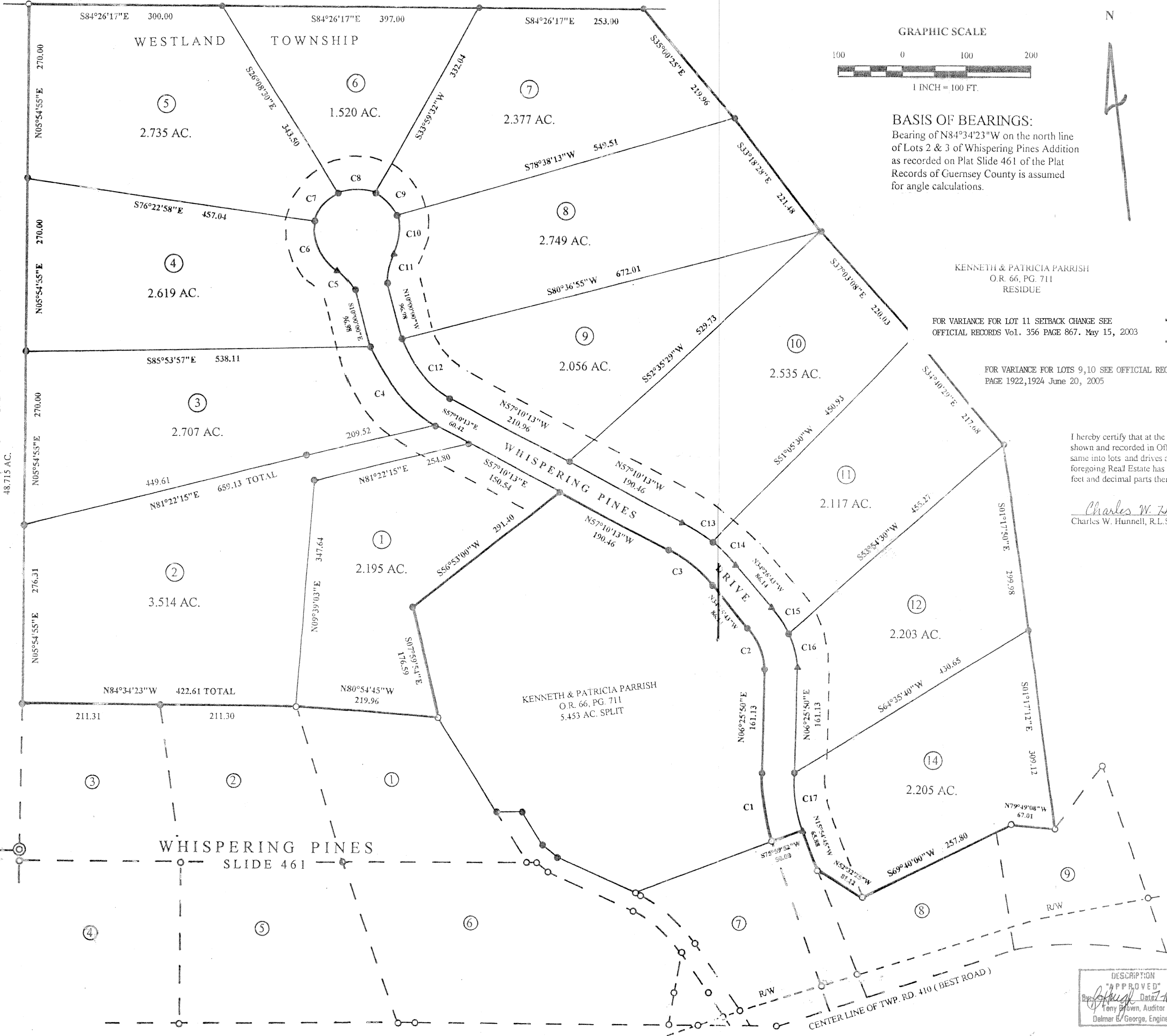
CURVE	RADIUS	DELTA	ARC	CHORD	CHORD BRG.
C1	303.99	20°19'16"	107.82	107.25	N03°43'49"W
C2	109.17	40°52'37"	77.89	76.25	N14°00'27"W
C3	223.81	22°43'31"	88.77	88.19	N45°48'28"W
C4	196.79	47°10'13"	162.01	157.48	S33°35'06"E
C5	60.00	44°54'08"	47.02	45.83	S32°27'04"E
C6	60.00	70°31'58"	73.87	69.29	S19°38'01"E
C7	60.00	50°33'52"	52.95	51.25	S40°54'46"W
C8	60.00	58°15'01"	61.00	58.41	N84°40'47"W
C9	60.00	44°11'46"	46.28	45.14	N33°27'24"W
C10	60.00	46°15'38"	48.44	47.14	N11°46'03"E
C11	60.00	44°54'08"	47.02	45.83	N12°27'04"E
C12	116.79	47°10'13"	120.85	117.46	N57°35'07"W
C13	273.81	11°21'45"	54.30	54.21	N51°29'20"W
C14	273.81	11°21'45"	54.30	54.21	N40°07'36"W
C15	159.17	20°26'19"	56.78	56.48	N24°13'34"W
C16	159.17	20°26'19"	56.78	56.48	N03°47'19"W
C17	253.99	20°17'57"	89.99	89.52	N03°42'48"W



DESCRIPTION
"APPROVED"
By *[Signature]* Date 7-10-01
Tony Brown, Auditor
Delmer E. George, Engineer

HUNNELL LAND SURVEYING
350 MAPLE AVE.
SENECAVILLE, OH 43780
(740) 685-5049

EDWARD & RITA SAMPFSON
D.V. 286, PG. 396
48.715 AC.



WHISPERING PINES
SLIDE 461

KENNETH & PATRICIA PARRISH
O.R. 66, PG. 711
5.453 AC. SPLIT