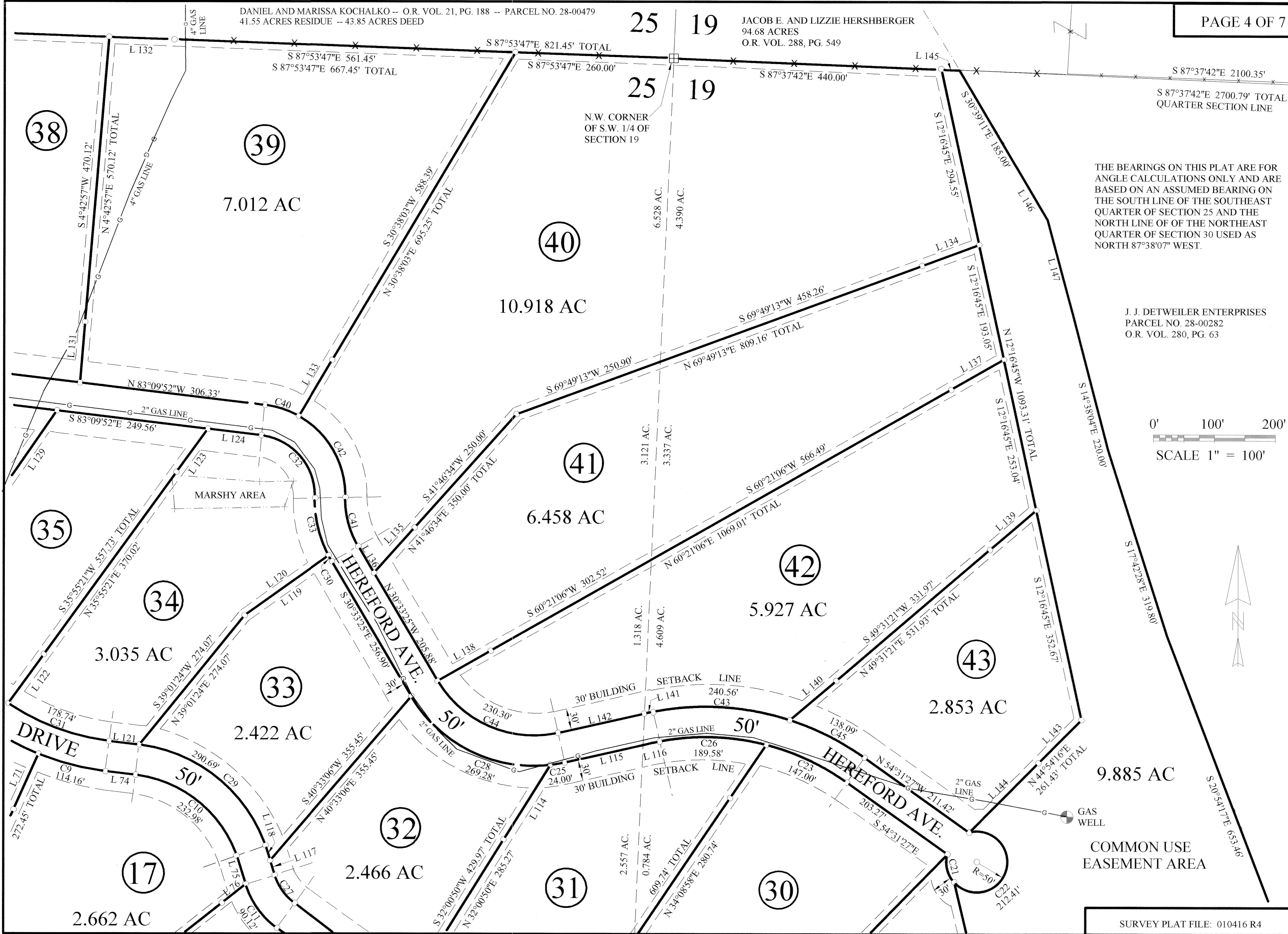
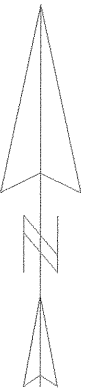
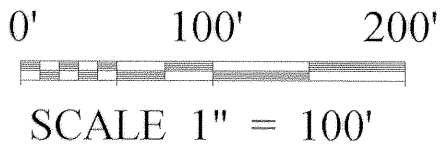


DANIEL AND MARISSA KOCHALKO -- O.R. VOL. 21, PG. 188 -- PARCEL NO. 28-00479
41.55 ACRES RESIDUE -- 43.85 ACRES DEED

JACOB E. AND LIZZIE HERSHBERGER
94.68 ACRES
O.R. VOL. 288, PG. 549

THE BEARINGS ON THIS PLAT ARE FOR ANGLE CALCULATIONS ONLY AND ARE BASED ON AN ASSUMED BEARING ON THE SOUTH LINE OF THE SOUTHEAST QUARTER OF SECTION 25 AND THE NORTH LINE OF THE NORTHEAST QUARTER OF SECTION 30 USED AS NORTH 87°38'07" WEST.

J. J. DETWEILER ENTERPRISES
PARCEL NO. 28-00282
O.R. VOL. 280, PG. 63



COMMON USE EASEMENT AREA