

FOR EXISTING & PROPOSED CURVE DATA SEE SHEET 3

**LEGEND**

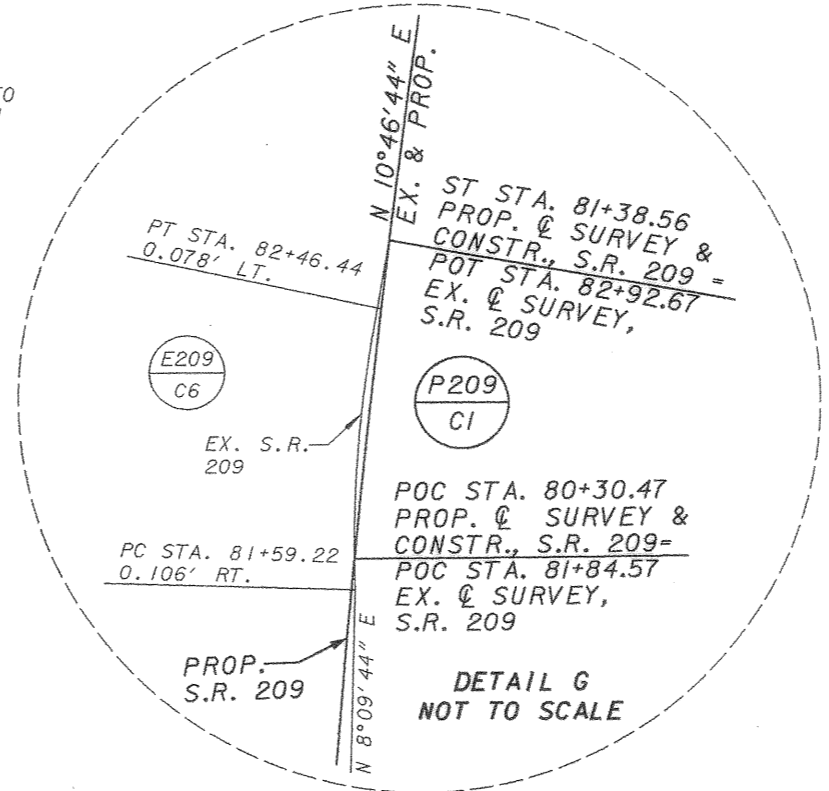
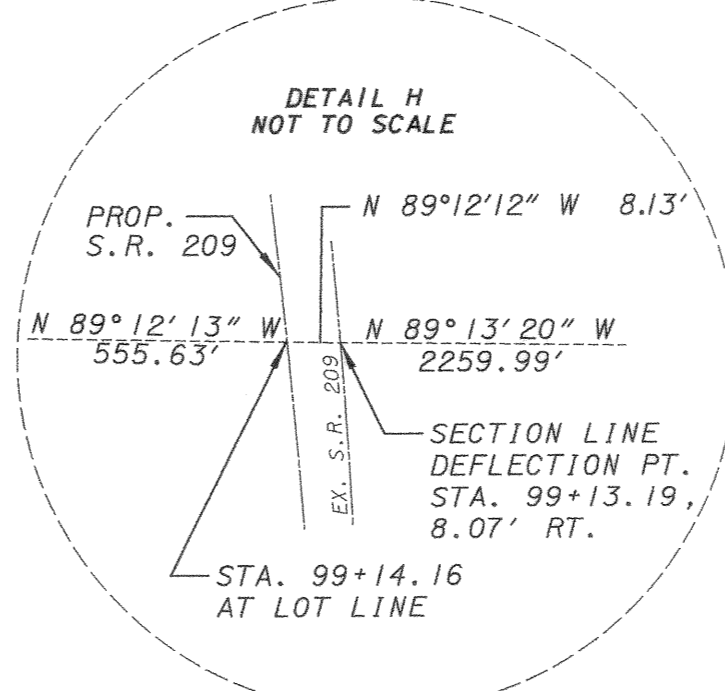
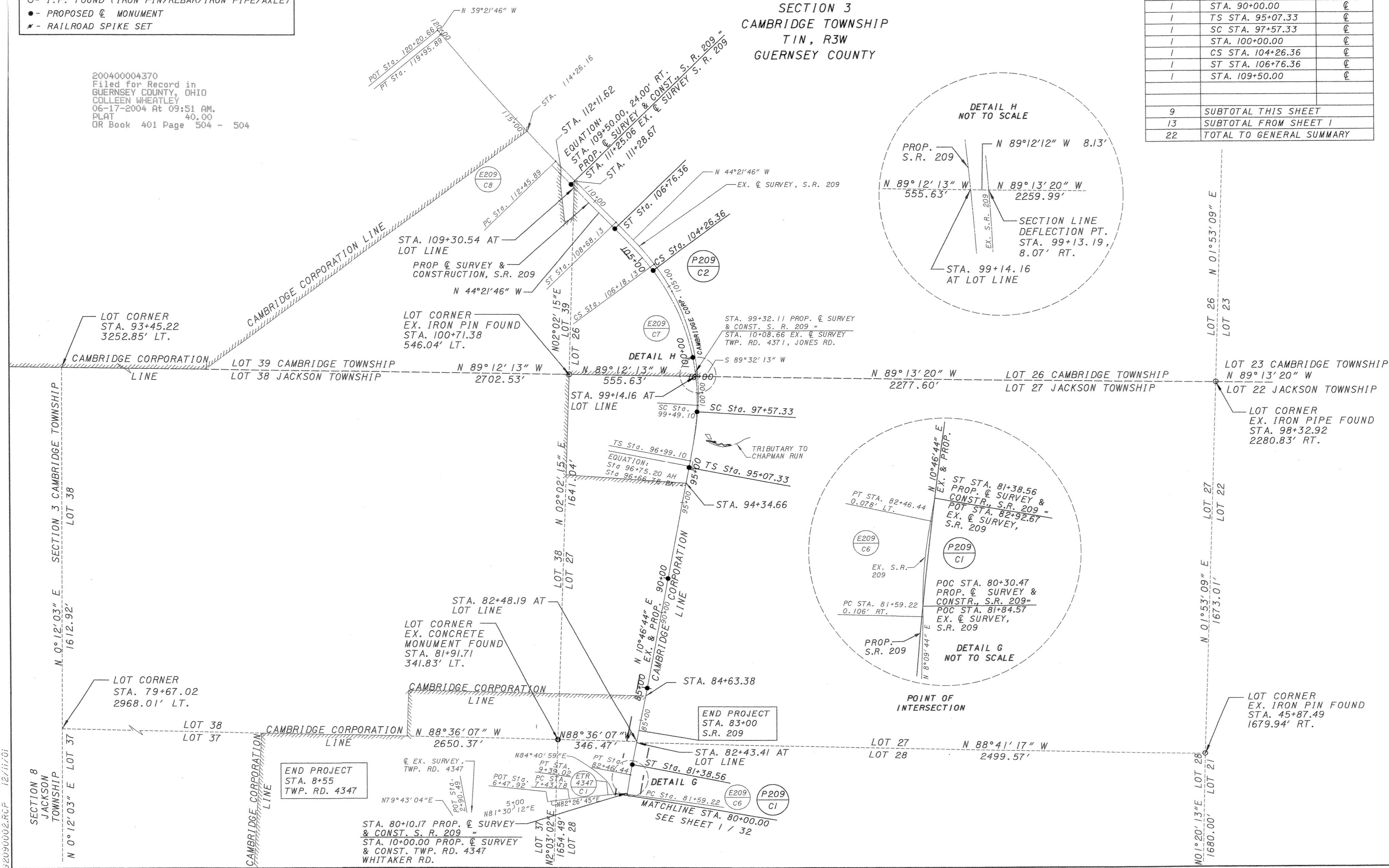
- - STONE FOUND
- - I.P. FOUND (IRON PIN/REBAR/IRON PIPE/AXLE)
- - PROPOSED @ MONUMENT
- ✱ - RAILROAD SPIKE SET

200400004370  
 Filed for Record in  
 GUERNSEY COUNTY, OHIO  
 COLLEEN WHEATLEY  
 06-17-2004 At 09:51 AM.  
 PLAT 40.00  
 OR Book 401 Page 504 - 504

MILITARY LOTS 21, 22, 27, 28, 37 & 38  
 SECTION 8  
 JACKSON TOWNSHIP  
 MILITARY LOTS 23, 26 & 39  
 SECTION 3  
 CAMBRIDGE TOWNSHIP  
 T1N, R3W  
 GUERNSEY COUNTY

ADJUSTABLE CENTERLINE MONUMENTS (●) ARE TO BE PLACED AT THE FOLLOWING LOCATIONS:

QUANTITY	STATION	OFFSET
1	ST STA. 81+38.56	℄
1	STA. 85+00.00	℄
1	STA. 90+00.00	℄
1	TS STA. 95+07.33	℄
1	SC STA. 97+57.33	℄
1	STA. 100+00.00	℄
1	CS STA. 104+26.36	℄
1	ST STA. 106+76.36	℄
1	STA. 109+50.00	℄
9	SUBTOTAL THIS SHEET	
13	SUBTOTAL FROM SHEET 1	
22	TOTAL TO GENERAL SUMMARY	



SCALE IN FEET

0 100 200

N

PID NO. 11723

STATE JOB NO. 053860

FED. PROJ. NO. TE21 G990

S.W. RESURVER C.S. FOR RECORD

BY J.J.S./J.G.

CENTERLINE PLAT STA. 80+00 TO STA. 120+00

GUE-209-11.50

2 / 32

310 / 341