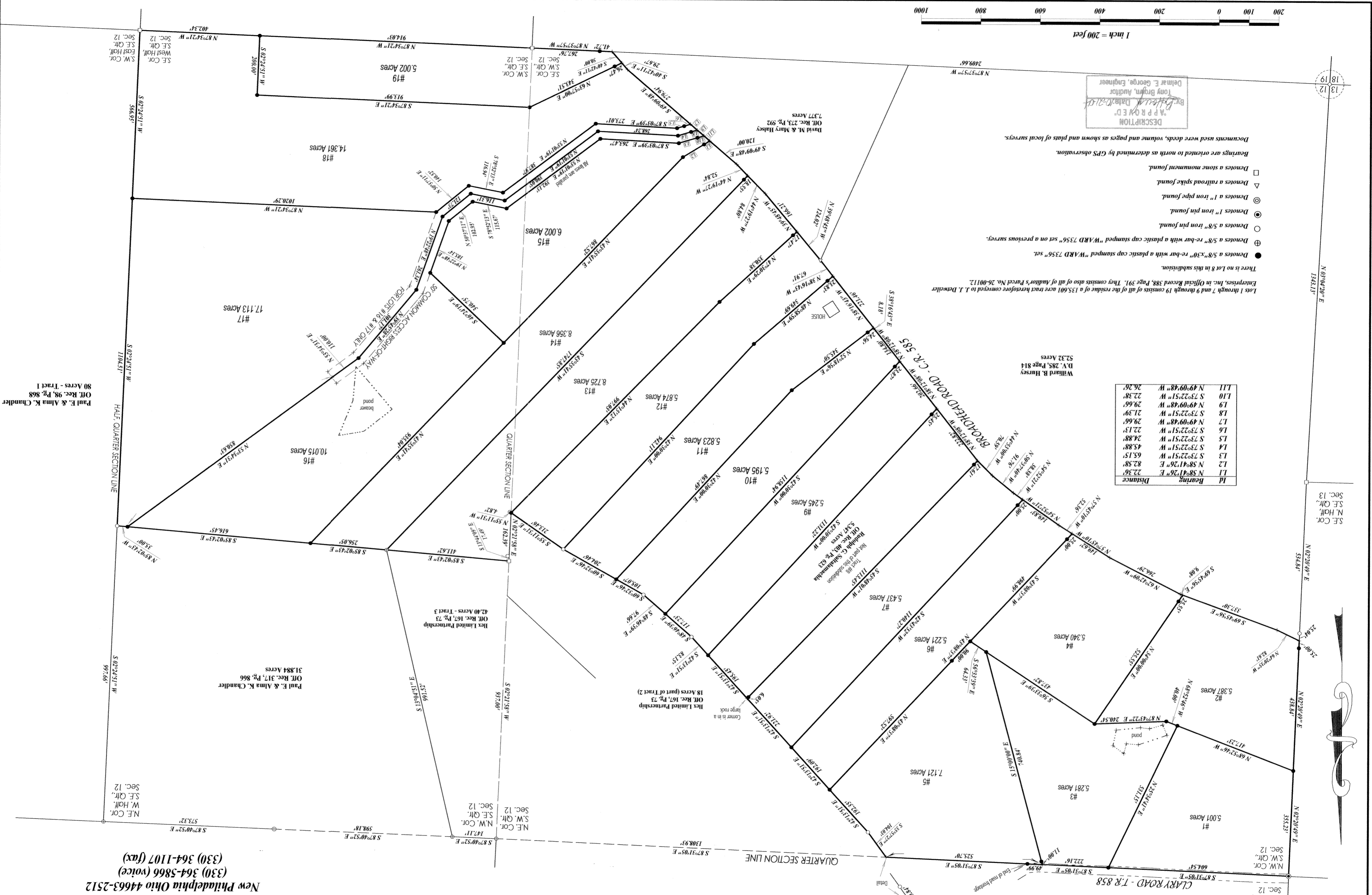


These properties are subject to all legal highways, rights-of-way, easements, leases and restrictions of record or otherwise legally established which may not be necessarily shown hereon.

Prepared by
WARD & EMLER SURVEYING, INC.
 113 Third Street SE
 New Philadelphia Ohio 44663-2512
 (330) 364-5866 (voice)
 (330) 364-1107 (fax)

YODER FARM PROPERTY



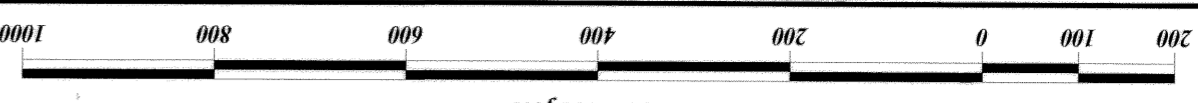
Lot	Bearing	Distance
L1	N 58°41'26" E	22.36'
L2	N 58°41'26" E	82.58'
L3	S 73°22'51" W	65.15'
L4	S 73°22'51" W	45.88'
L5	S 73°22'51" W	24.88'
L6	S 73°22'51" W	22.13'
L7	N 49°09'48" W	29.66'
L8	S 73°22'51" W	21.39'
L9	N 49°09'48" W	29.66'
L10	S 73°22'51" W	22.38'
L11	N 49°09'48" W	26.26'

Lot 1 through 7 and 9 through 19 consists of all of the residue of a 135.601 acre tract heretofore conveyed to J. J. Deweller Enterprises, Inc. in Official Record 388, Page 391. They consists also of all of Auditor's Parcel No. 26-00112. There is no Lot 8 in this subdivision.

● Denotes a 5/8"x30" re-bar with a plastic cap stamped "WARD 7356" set.
 ⊕ Denotes a 5/8"x30" re-bar with a plastic cap stamped "WARD 7356" set on a previous survey.
 ○ Denotes a 5/8" iron pin found.
 ⊙ Denotes a 1" iron pin found.
 ⊗ Denotes a 1" iron pipe found.
 △ Denotes a railroad spike found.
 □ Denotes a stone monument found.

Bearings are oriented to north as determined by GPS observation.
 Documents used were deeds, volume and pages as shown and plats of local surveys.

DESCRIPTION
 A.P.R.O.V.E.D.
 Paul E. & Alma K. Chandler
 Tony Bryson, Auditor
 Delmar E. George, Engineer



1819

Sec. 13
 S.E. Cor.
 N. Hoff.
 S.E. Qtr.

Sec. 12
 S.W. Cor.
 N.W. Qtr.

Sec. 12
 S.W. Cor.
 N.W. Qtr.

Sec. 12
 S.W. Cor.
 N.W. Qtr.

Sec. 12
 S.W. Cor.
 N.W. Qtr.

Sec. 12
 S.W. Cor.
 N.W. Qtr.

Sec. 12
 S.W. Cor.
 N.W. Qtr.

Sec. 12
 S.W. Cor.
 N.W. Qtr.

Sec. 12
 S.W. Cor.
 N.W. Qtr.

Sec. 12
 S.W. Cor.
 N.W. Qtr.

Sec. 12
 S.W. Cor.
 N.W. Qtr.

Sec. 12
 S.W. Cor.
 N.W. Qtr.

Sec. 12
 S.W. Cor.
 N.W. Qtr.

Sec. 12
 S.W. Cor.
 N.W. Qtr.

Sec. 12
 S.W. Cor.
 N.W. Qtr.

Sec. 12
 S.W. Cor.
 N.W. Qtr.

Sec. 12
 S.W. Cor.
 N.W. Qtr.

Sec. 12
 S.W. Cor.
 N.W. Qtr.

Sec. 12
 S.W. Cor.
 N.W. Qtr.

Sec. 12
 S.W. Cor.
 N.W. Qtr.

Sec. 12
 S.W. Cor.
 N.W. Qtr.

Sec. 12
 S.W. Cor.
 N.W. Qtr.

Sec. 12
 S.W. Cor.
 N.W. Qtr.

Sec. 12
 S.W. Cor.
 N.W. Qtr.

Sec. 12
 S.W. Cor.
 N.W. Qtr.

Sec. 12
 S.W. Cor.
 N.W. Qtr.

Sec. 12
 S.W. Cor.
 N.W. Qtr.

Sec. 12
 S.W. Cor.
 N.W. Qtr.

Sec. 12
 S.W. Cor.
 N.W. Qtr.

Sec. 12
 S.W. Cor.
 N.W. Qtr.

Sec. 12
 S.W. Cor.
 N.W. Qtr.

Sec. 12
 S.W. Cor.
 N.W. Qtr.

Sec. 12
 S.W. Cor.
 N.W. Qtr.

Sec. 12
 S.W. Cor.
 N.W. Qtr.

Sec. 12
 S.W. Cor.
 N.W. Qtr.

Sec. 12
 S.W. Cor.
 N.W. Qtr.

Sec. 12
 S.W. Cor.
 N.W. Qtr.

Sec. 12
 S.W. Cor.
 N.W. Qtr.

Sec. 12
 S.W. Cor.
 N.W. Qtr.

Sec. 12
 S.W. Cor.
 N.W. Qtr.

Sec. 12
 S.W. Cor.
 N.W. Qtr.

Sec. 12
 S.W. Cor.
 N.W. Qtr.

Sec. 12
 S.W. Cor.
 N.W. Qtr.

Sec. 12
 S.W. Cor.
 N.W. Qtr.

Sec. 12
 S.W. Cor.
 N.W. Qtr.

Sec. 12
 S.W. Cor.
 N.W. Qtr.

Sec. 12
 S.W. Cor.
 N.W. Qtr.

Sec. 12
 S.W. Cor.
 N.W. Qtr.

Sec. 12
 S.W. Cor.
 N.W. Qtr.

Sec. 12
 S.W. Cor.
 N.W. Qtr.

Sec. 12
 S.W. Cor.
 N.W. Qtr.

Sec. 12
 S.W. Cor.
 N.W. Qtr.

Sec. 12
 S.W. Cor.
 N.W. Qtr.

Sec. 12
 S.W. Cor.
 N.W. Qtr.

Sec. 12
 S.W. Cor.
 N.W. Qtr.

Sec. 12
 S.W. Cor.
 N.W. Qtr.

Sec. 12
 S.W. Cor.
 N.W. Qtr.

Sec. 12
 S.W. Cor.
 N.W. Qtr.

Sec. 12
 S.W. Cor.
 N.W. Qtr.

Sec. 12
 S.W. Cor.
 N.W. Qtr.

Sec. 12
 S.W. Cor.
 N.W. Qtr.

Sec. 12
 S.W. Cor.
 N.W. Qtr.

Sec. 12
 S.W. Cor.
 N.W. Qtr.

Sec. 12
 S.W. Cor.
 N.W. Qtr.

Sec. 12
 S.W. Cor.
 N.W. Qtr.

Sec. 12
 S.W. Cor.
 N.W. Qtr.

Sec. 12
 S.W. Cor.
 N.W. Qtr.

Sec. 12
 S.W. Cor.
 N.W. Qtr.

Sec. 12
 S.W. Cor.
 N.W. Qtr.

Sec. 12
 S.W. Cor.
 N.W. Qtr.

Sec. 12
 S.W. Cor.
 N.W. Qtr.

Sec. 12
 S.W. Cor.
 N.W. Qtr.

Sec. 12
 S.W. Cor.
 N.W. Qtr.

Sec. 12
 S.W. Cor.
 N.W. Qtr.

Sec. 12
 S.W. Cor.
 N.W. Qtr.

Sec. 12
 S.W. Cor.
 N.W. Qtr.

Sec. 12
 S.W. Cor.
 N.W. Qtr.

Sec. 12
 S.W. Cor.
 N.W. Qtr.

Sec. 12
 S.W. Cor.
 N.W. Qtr.

Sec. 12
 S.W. Cor.
 N.W. Qtr.

Sec. 12
 S.W. Cor.
 N.W. Qtr.

Sec. 12
 S.W. Cor.
 N.W. Qtr.

Sec. 12
 S.W. Cor.
 N.W. Qtr.

Sec. 12
 S.W. Cor.
 N.W. Qtr.

Sec. 12
 S.W. Cor.
 N.W. Qtr.

Sec. 12
 S.W. Cor.
 N.W. Qtr.

Sec. 12
 S.W. Cor.
 N.W. Qtr.

Sec. 12
 S.W. Cor.
 N.W. Qtr.

Sec. 12
 S.W. Cor.
 N.W. Qtr.

Sec. 12
 S.W. Cor.
 N.W. Qtr.

Sec. 12
 S.W. Cor.
 N.W. Qtr.

Sec. 12
 S.W. Cor.
 N.W. Qtr.

Sec. 12
 S.W. Cor.
 N.W. Qtr.

Sec. 12
 S.W. Cor.
 N.W. Qtr.

Sec. 12
 S.W. Cor.
 N.W. Qtr.

Sec. 12
 S.W. Cor.
 N.W. Qtr.

Sec. 12
 S.W. Cor.
 N.W. Qtr.

Sec. 12
 S.W. Cor.
 N.W. Qtr.

Sec. 12
 S.W. Cor.
 N.W. Qtr.

Sec. 12
 S.W. Cor.
 N.W. Qtr.

Sec. 12
 S.W. Cor.
 N.W. Qtr.

Sec. 12
 S.W. Cor.
 N.W. Qtr.

Sec. 12
 S.W. Cor.
 N.W. Qtr.

Sec. 12
 S.W. Cor.
 N.W. Qtr.

Sec. 12
 S.W. Cor.
 N.W. Qtr.

Sec. 12
 S.W. Cor.
 N.W. Qtr.

Sec. 12
 S.W. Cor.
 N.W. Qtr.

Sec. 12
 S.W. Cor.
 N.W. Qtr.

Sec. 12
 S.W. Cor.
 N.W. Qtr.

Sec. 12
 S.W. Cor.
 N.W. Qtr.

Sec. 12
 S.W. Cor.
 N.W. Qtr.

Sec. 12
 S.W. Cor.
 N.W. Qtr.

Sec. 12
 S.W. Cor.
 N.W. Qtr.

Sec. 12
 S.W. Cor.
 N.W. Qtr.

Sec. 12
 S.W. Cor.
 N.W. Qtr.

Sec. 12
 S.W. Cor.
 N.W. Qtr.

Sec. 12
 S.W. Cor.
 N.W. Qtr.

Sec. 12
 S.W. Cor.
 N.W. Qtr.

Sec. 12
 S.W. Cor.
 N.W. Qtr.

Sec. 12
 S.W. Cor.
 N.W. Qtr.

Sec. 12
 S.W. Cor.
 N.W. Qtr.

Sec. 12
 S.W. Cor.
 N.W. Qtr.

Sec. 12
 S.W. Cor.
 N.W. Qtr.

Sec. 12
 S.W. Cor.
 N.W. Qtr.

Sec. 12
 S.W. Cor.
 N.W. Qtr.

Sec. 12
 S.W. Cor.
 N.W. Qtr.

Sec. 12
 S.W. Cor.
 N.W. Qtr.

Sec. 12
 S.W. Cor.
 N.W. Qtr.

Sec. 12
 S.W. Cor.
 N.W. Qtr.

Sec. 12
 S.W. Cor.
 N.W. Qtr.

Sec. 12
 S.W. Cor.
 N.W. Qtr.

Sec. 12
 S.W. Cor.
 N.W. Qtr.

Sec. 12
 S.W. Cor.
 N.W. Qtr.

Sec. 12
 S.W. Cor.
 N.W. Qtr.

Sec. 12
 S.W. Cor.
 N.W. Qtr.

Sec. 12
 S.W. Cor.
 N.W. Qtr.

Sec. 12
 S.W. Cor.
 N.W. Qtr.

Sec. 12
 S.W. Cor.
 N.W. Qtr.

Sec. 12
 S.W. Cor.
 N.W. Qtr.

Sec. 12
 S.W. Cor.
 N.W. Qtr.

Sec. 12
 S.W. Cor.
 N.W. Qtr.

Sec. 12
 S.W. Cor.
 N.W. Qtr.

Sec. 12
 S.W. Cor.
 N.W. Qtr.

Sec. 12
 S.W. Cor.
 N.W. Qtr.

Sec. 12
 S.W. Cor.
 N.W. Qtr.

Sec. 12
 S.W. Cor.
 N.W. Qtr.

Sec. 12
 S.W. Cor.
 N.W. Qtr.

Sec. 12
 S.W. Cor.
 N.W. Qtr.

Sec. 12
 S.W. Cor.
 N.W. Qtr.

Sec. 12
 S.W. Cor.
 N.W. Qtr.

Sec. 12
 S.W. Cor.
 N.W. Qtr.

Sec. 12
 S.W. Cor.
 N.W. Qtr.

Sec. 12
 S.W. Cor.
 N.W. Qtr.

Sec. 12
 S.W. Cor.
 N.W. Qtr.

Sec. 12
 S.W. Cor.
 N.W. Qtr.

Sec. 12
 S.W. Cor.
 N.W. Qtr.

Sec. 12
 S.W. Cor.
 N.W. Qtr.

Sec. 12
 S.W. Cor.
 N.W. Qtr.

Sec. 12
 S.W. Cor.
 N.W. Qtr.

Sec. 12
 S.W. Cor.
 N.W. Qtr.

Sec. 12
 S.W. Cor.
 N.W. Qtr.

Sec. 12
 S.W. Cor.
 N.W. Qtr.

Sec. 12
 S.W. Cor.
 N.W. Qtr.

Sec. 12
 S.W. Cor.
 N.W. Qtr.

Sec. 12
 S.W. Cor.
 N.W. Qtr.

Sec. 12
 S.W. Cor.
 N.W. Qtr.

Sec. 12
 S.W. Cor.
 N.W. Qtr.

Sec. 12
 S.W. Cor.
 N.W. Qtr.

Sec. 12
 S.W. Cor.
 N.W. Qtr.

Sec. 12
 S.W. Cor.
 N.W. Qtr.

Sec. 12
 S.W. Cor.
 N.W. Qtr.

Sec. 12
 S.W. Cor.
 N.W. Qtr.

Sec. 12
 S.W. Cor.
 N.W. Qtr.

Sec. 12
 S.W. Cor.
 N.W. Qtr.

Sec. 12
 S.W. Cor.
 N.W. Qtr.

Sec. 12
 S.W. Cor.
 N.W. Qtr.