

D.O. HALL BUSINESS CENTER PHASE II

SITUATED IN THE STATE OF OHIO, COUNTY OF GUERNSEY,
CITY OF CAMBRIDGE, BEING A PART OF SECTION 8,
TOWNSHIP-1 NORTH, RANGE-3 WEST

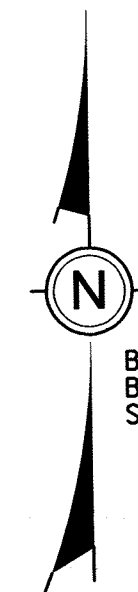
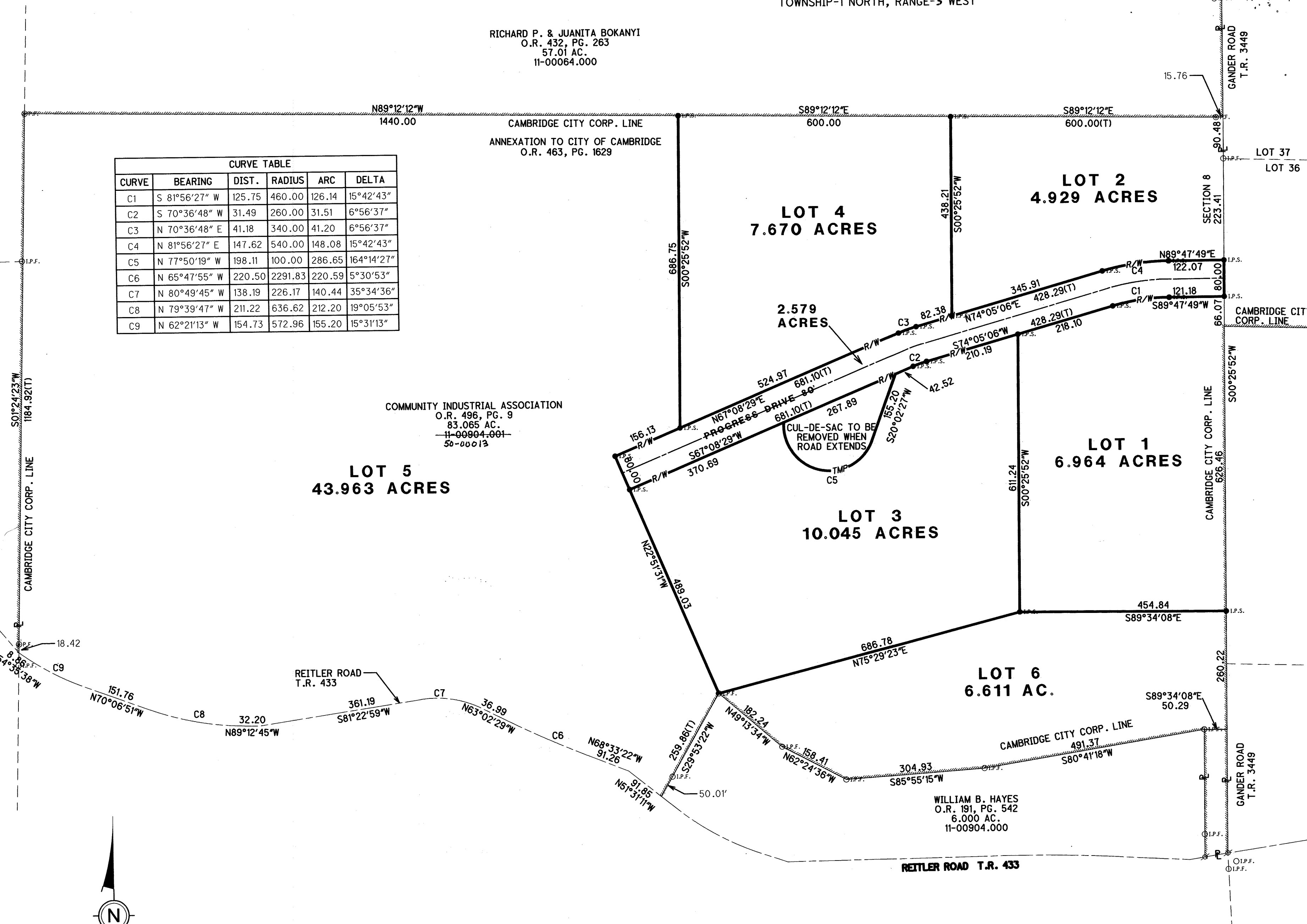
RICHARD P. & JUANITA BOKANYI
O.R. 432, PG. 263
57.01 AC.
11-00064.000

CAMBRIDGE CITY CORP. LINE
ANNEXATION TO CITY OF CAMBRIDGE
O.R. 463, PG. 1629

COMMUNITY INDUSTRIAL ASSOCIATION
O.R. 496, PG. 9
83.065 AC.
11-00904.001
50-00013

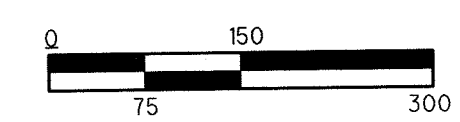
WILLIAM B. HAYES
O.R. 191, PG. 542
6.000 AC.
11-00904.000

CURVE TABLE					
CURVE	BEARING	DIST.	RADIUS	ARC	DELTA
C1	S 81°56'27" W	125.75	460.00	126.14	15°42'43"
C2	S 70°36'48" W	31.49	260.00	31.51	6°56'37"
C3	N 70°36'48" E	41.18	340.00	41.20	6°56'37"
C4	N 81°56'27" E	147.62	540.00	148.08	15°42'43"
C5	N 77°50'19" W	198.11	100.00	286.65	164°14'27"
C6	N 65°47'55" W	220.50	2291.83	220.59	5°30'53"
C7	N 80°49'45" W	138.19	226.17	140.44	35°34'36"
C8	N 79°39'47" W	211.22	636.62	212.20	19°05'53"
C9	N 62°21'13" W	154.73	572.96	155.20	15°31'13"



BASIS OF BEARINGS:
BEARINGS HEREIN ARE BASED ON THE OHIO
STATE PLANE COORDINATE SYSTEM - SOUTH ZONE

- LEGEND**
- ⊙ I.P.F. : IRON PIPE FOUND
 - ⊙ I.P.F. : IRON PIN FOUND
 - I.P.S. : IRON PIN SET
5/8" REBAR WITH RED I.D. CAP STAMPED "J&H #8283"



HORIZONTAL
SCALE IN FEET

PREPARED BY:

Jobs Henderson & ASSOCIATES
Breaking Ground | Breaking Boundaries

Tel: 740.344.5451
Fax: 740.344.5746
59 Grant Street
Newark, Ohio 43055
www.jobshenderson.com