

SHEET NO.
RANGE-TWP.-SEC. SUB. SHT.

3 2 A4-9

06-00164 TOWNSHIP

CAMBRIDGE CORPORATION RD OR

CARD No. 7442 REMARKS

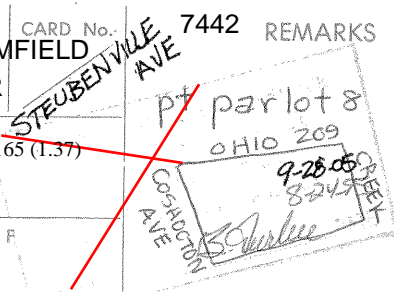
PG56

LOT OR PARCEL NO.

parlot 8 (25)

CORPORATION OR VILLAGE

SUBDIVISION
COMB: 06-00164 (1.38) & 06-00165 (1.37)



LET. A 3.103 N/S

-t-38a

LET. B

LET. C

LET. D

LET. E

LET. F

HUNNELL 2011

GRANTEE

TRANS. DATE

VOL.

PAGE

LET.

TRANS. DATE

VOL.

PAGE

SPLIT NO.

FORD, MARY

1958

239

495

FORD, JOHN & EVELYN

7-24-62

254

170

FORD, BILL F. & JUDITH R.

8-24-95

112

903

FORD, JUDITH R.

9-28-05

433

1089

SECRET, EDWARD & NORMA

11-28-2011

483

3371

SECRET, NORMA

6-20-2018

557

2198

SPLIT DATA

(OVER)

SHEET NO.
RANGE-TWP.-SEC. SUB. SHT.

3 2 A4-9

SEE TOP CARD

CAMBRIDGE CORPORATION

CARD No.

REMARKS

LOT OR PARCEL NO.

CORPORATION OR VILLAGE

SUBDIVISION

COMB: 06-00165 (1.38) & 06-00164 (1.37)

parlot 8

(24)

pt parlot 8

LET. A

3.103 N/S

1.37a

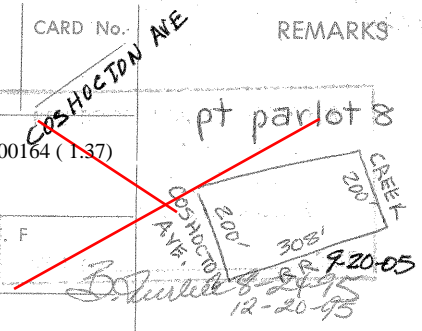
LET. B

LET. C

LET. D

LET. E

LET. F



HUNNELL 2011

GRANTEE

TRANS. DATE

VOL.

PAGE

LET.

TRANS. DATE

VOL.

PAGE

SPLIT NO.

FORD, MARY

1958

239

495

FORD, JOHN & EVELYN

7-24-62

254

170

FORD, BILL F. & JUDITH R.

8-24-95

112

903

FORD, WILLIAM LEE

12-20-95

120

828

FORD, JUDITH R.

9-28-05

433

1089

SECREST, EDWARD & NORMA

11-28-2011

483

3371

SPLIT DATA

(OVER)