

SHEET NO.
RANGE-TWP.-SEC. SUB. SHT.

06-01922 TOWNSHIP

CARD No.

PG56
REMARKS

3 2

14-9

CAMBRIDGE TWP.

66
GOMBER

Pt. Lot #29

LOT OR PARCEL NO.

CORPORATION OR VILLAGE

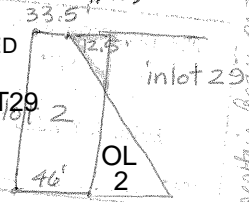
SUBDIVISION

Pt.29

CAMBRIDGE CITY CORP.

LOFLANDS SECOND

RED STAMPED
S/J 12-7-10



documents begin on the S line
 of GOMBER, the N line of #29
 on the N line of OL 2

LET. A	LET. B	LET. C	LET. D	LET. E	LET. F
.202 N/S	LOT29				
+ .007 OL2					

GRANTEE

SCHACH, ANDREW	TRANS. DATE	VOL.	PAGE
CLINE, FRANCIS & HELEN	4-1-68	277	617
CLINE, HELEN M.	9/28/81	346	538
HOLLINS, JOSEPH P.	3-20-03	349	637
CARPENTER, MARY B	12-7-10	474	3540
JAMIEL, DIXIE DOREEN	4-16-2015	526	491
LEONARD, JEFF A & LINDA M	7-28-2015	529	399

SPLIT DATA

LET.	TRANS. DATE	VOL.	PAGE	SPLIT NO.

SALING 2015

SEE ATTACHED CARD FOR PT OL2
(OVER)

SHEET NO.
RANGE—TWP.—SEC. SUB. SHT.

06-01922 TOWNSHIP

CARD No.

REMARKS PG56

3 2 A4-9

COMB: WITH TOP CARD
CAMBRIDGE CORPORATION

pt OL 2

LOT OR PARCEL NO.

CORPORATION OR VILLAGE

SUBDIVISION

OL 2 9

LOFLAND'S 2nd

LET. A

LET. B

LET. C

LET. D

LET. E

LET. F

.007 N/S

349/637

Asst. Recorder 3/2/63

SALING 2015

GRANTEE

TRANS. DATE

VOL.

PAGE

LET.

TRANS. DATE

VOL.

PAGE

SPLIT NO.

SCHACH, ANDREW

274

617

CLINE, FRANCIS & HELEN

4-1-68

277

134

HOLLINS, JOSEPH P.

3-20-03

349

637

CARPENTER, MARY B

12-7-2010

474

3540

JAMIEL, DIXIE DOREEN

4-16-2015

526

491

SPLIT DATA

(OVER)