

SHEET NO.
RANGE—TWP.—SEC. SUB. SHT.

3 2

A 4-15

06-04779

TOWNSHIP

CARD No.

205
Summit

REMARKS

CAMBRIDGE CORP.

W.Pt.O.L.39 SW.

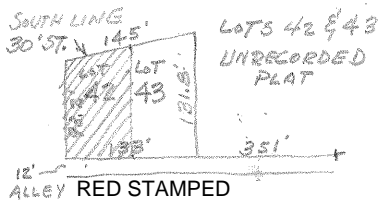
LOT OR PARCEL NO.

CORPORATION OR VILLAGE

SUBDIVISION

(28)

O.L.39



LET. A

LET. B

LET. C

LET. D

LET. E

LET. F

GRANTEE

MEKIA, A. J., & BARBARA

MORRIS, RAYMOND & ERCELL

MORRIS, RONALD C.

HARPER, BONNIE

HARPER, JOHN & SHELBY HAGAR

TRANS. DATE

VOL.

PAGE

10-27-67

255 104

4-21-75

275 735
312 111

9-6-05

432

2442

3-25-10

469

2603

(OVER)

SPLIT DATA

LET.

TRANS. DATE

VOL.

PAGE

SPLIT NO.